

PRODUCT LIST





Dear Client,

BioSystems S.A. improves the well-being of people around the world.

Since 1981 we equip customers with highly reliable state-of-the-art solutions and streamline laboratory workflow, enhancing operational efficiency and improving patient treatment.

By adapting ourselves to new necessities in the area of clinical diagnosis, we research, design, manufacture and market an extensive, well-rounded portfolio of products featured in this product list.

We look forward to being your trusted partner in upcoming years.

Best regards,

Antonio Elduque
CEO
BioSystems S.A.

Summary



CLINICAL CHEMISTRY	3
BIOCHEMISTRY	4
TURBIDIMETRY	8
COAGULATION	10
MICROCOLUMN CHROMATOGRAPHY	11
STANDARDS / CALIBRATORS	12
INSTRUMENTS	13
DEDICATED REAGENTS	18
QUALITY CONTROL	24
INTERNAL QUALITY CONTROL	25
EXTERNAL QUALITY CONTROL (PREVECAL)	26
SUPPORT MATERIAL	27
AUTOIMMUNITY	28
IMMUNOFLUORESCENCE	29
ELISA	32
INSTRUMENTS	34
SEROLOGY	37
SEROLOGY	38
ALPHABETICAL INDEX	40

BioSystems S.A. reserves the right to change specifications without prior notice.

CLINICAL CHEMISTRY



BIOCHEMISTRY

Code	Quantity	Method
ACID PHOSPHATASE (ACP)		
11548	40 mL	SFBC
ADENOSINE DEAMINASE (ADA)		
12754	4 x 10 mL	ADENOSINE-GLUTAMATE DEHYDROGENASE Liquid reagents
ALANINE AMINOTRANSFERASE (ALT/GPT)		
11832	1 x 50 mL	
11533	1 x 200 mL	IFCC
11568	1 x 500 mL	Liquid reagents
11562	1 x 1000 mL	
ALBUMIN		
11573	1 x 250 mL	BROMOCRESOL GREEN
11547	2 x 250 mL	<i>Standard included</i> Ready to use liquid reagent
ALKALINE PHOSPHATASE (ALP)-AMP		
11592	1 x 50 mL	AMP BUFFER (IFCC)
11593	1 x 200 mL	Liquid reagents
11598	5 x 100 mL	
ALKALINE PHOSPHATASE (ALP)-DEA		
11590	1 x 50 mL	DEA BUFFER
11591	1 x 200 mL	Liquid reagents
11597	5 x 100 mL	
α-AMYLASE-DIRECT		
11583	5 x 5 mL	DIRECT SUBSTRATE
11550	6 x 25 mL	Ready to use liquid reagent
α-AMYLASE-EPS		
11534	1 x 40 mL	IFCC Liquid reagents
α-AMYLASE-PANCREATIC		
11799	1 x 25 mL	IFCC Liquid reagents
ASPARTATE AMINOTRANSFERASE (AST/GOT)		
11830	1 x 50 mL	IFCC
11531	1 x 200 mL	Liquid reagents
11567	1 x 500 mL	
11561	1 x 1000 mL	
BILIRUBIN (DIRECT)		
11511	4 x 50 mL	DIAZOTIZED SULFANILIC
11545	2 x 500 mL	Liquid reagents
BILIRUBIN (TOTAL)		
11510	4 x 50 mL	DIAZOTIZED SULFANILIC
11544	2 x 500 mL	Liquid reagents



BIOCHEMISTRY

Code	Quantity	Method
BILIRUBIN (TOTAL AND DIRECT)		
11515	2 x 50 + 2 x 50 mL	DIAZOTIZED SULFANILIC
11555	500 + 500 mL	Liquid reagents
CALCIUM-ARSENAZO		
11570	1 x 200 mL	ARSENAZO III
11571	1 x 500 mL	<i>Standard included</i> Ready to use liquid reagent
CALCIUM CRESOLPHTHALEIN		
11811	1 x 20 mL	O-CRESOLPHTHALEIN COMPLEXONE <i>Standard included</i>
11812	1 x 500 mL	Liquid reagents
CALCIUM-MTB		
11527	4 x 50 mL	METHYLTHYMOL BLUE
11507	2 x 250 mL	<i>Standard included</i> Liquid reagents
CARBON DIOXIDE (CO₂)		
11558	1 x 50 mL	PHOSPHOENOLPYRUVATE CARBOXYLASE/ MALATE
11827	1 x 200 mL	DEHYDROGENASE Liquid reagents
CHOLESTEROL		
11805	1 x 50 mL	CHOLESTEROL OXIDASE/PEROXIDASE
11505	1 x 200 mL	<i>Standard included</i>
11506	1 x 500 mL	Ready to use liquid reagent
11539	1 x 1000 mL	
CHOLESTEROL LDL DIRECT		
11585	1 x 80 mL	DETERGENT Liquid reagents
CHOLESTEROL HDL DIRECT		
11557	1 x 80 mL	DETERGENT Liquid reagents
CHOLESTEROL HDL		
11523	2 x 50 mL + 2 x 50 mL	PHOSPHOTUNGSTATE/Mg ⁺² -CHOLESTEROL OXIDASE/ PEROXIDASE <i>Standard included</i> Ready to use liquid reagent
CHOLESTEROL HDL PRECIPITATING REAGENT		
11648	1 x 50 mL	PHOSPHOTUNGSTATE/Mg ⁺² <i>Standard included</i> Ready to use liquid reagent
CHOLESTEROL LDL PRECIPITATING REAGENT		
11579	1 x 20 mL	POLYVINYL SULPHATE/POLYETHYLENEGLYCOL Ready to use liquid reagent
CHOLINESTERASE (CHE)		
11588	1 x 50 mL	BUTIRYL THIOCHOLINE
11589	4x50 mL	Liquid reagents

BIOCHEMISTRY

Code	Quantity	Method
CITRATE		
11795	1 x 50 mL	CITRATE LYASE/MALATE DEHYDROGENASE <i>Standard included</i> Liquid reagents
CREATINE KINASE (CK)		
11790	1 x 50 mL	IFCC
11791	4 x 50 mL	Liquid reagents
CREATINE KINASE-MB (CK-MB)		
11792	1 x 50 mL	IMMUNOINHIBITION Liquid reagents
CREATININE		
11802	2 x 50 mL	ALKALINE PICRATE
11502	4 x 50 mL	<i>Standard included</i>
11542	2 x 500 mL	Liquid reagents
FRUCTOSE		
11794	1 x 50 mL	HEXOKINASE/PHOSPHOGLUCOSE ISOMERASE <i>Standard included</i> Liquid reagents
FRUCTOSAMINE		
11046	2 x 50 mL	NBT <i>Standard included</i> Ready to use liquid reagent
γ-GLUTAMYLTRANSFERASE (γ-GT)		
11584	1 x 50 mL	IFCC
11520	1 x 200 mL	Liquid reagents
GLUCOSE		
11803	1 x 50 mL	GLUCOSE OXIDASE/PEROXIDASE
11503	1 x 200 mL	<i>Standard included</i>
11504	1 x 500 mL	Ready to use liquid reagent
11538	1 x 1000 mL	
GLUCOSE-HEXOKINASE		
11656	1 x 200 mL	HEXOKINASE <i>Standard included</i> Liquid reagent
IRON-CHROMAZUROL		
11546	4 x 50 mL	CHROMAZUROL B <i>Standard included</i> Ready to use liquid reagent
IRON-FERROZINE		
11509	4 x 50 mL	FERROZINE <i>Standard included</i> Liquid reagents
IRON BINDING CAPACITY		
11554	50 tests	Precipitating reagent Fe ³⁺ -MAGNESIUM HYDROXIDE CARBONATE



BIOCHEMISTRY

Code	Quantity	Method
LACTATE DEHYDROGENASE (LDH)		
11580	1 x 50 mL	PYRUVATE
11581	1 x 200 mL	Liquid reagents
LACTATE DEHYDROGENASE (LDH)-IFCC		
11586	1 x 50 mL	IFCC
11587	1 x 200 mL	Liquid reagents
LIPASE		
11793	1 x 60 mL	COLOR Liquid reagents
MAGNESIUM		
11797	4 x 50 mL	XYLIDYL BLUE <i>Standard included</i> Liquid reagents
PHOSPHORUS		
11508	3 x 40 + 1 x 50 mL	PHOSPHOMOLYBDATE/UV <i>Standard included</i> Liquid reagents
PROTEIN (TOTAL)		
11800	1 x 50 mL	BIURET
11572	1 x 250 mL	<i>Standard included</i>
11500	2 x 250 mL	Ready to use liquid reagent
11553	1 x 1000 mL	
PROTEIN (URINE+CSF)		
11501	4 x 50 mL	PYROGALLOL RED
11559	2 x 250 mL	<i>Standard included</i> Ready to use liquid reagent
TRIGLYCERIDES		
11828	1 x 50 mL	GLYCEROL PHOSPHATE OXIDASE/PEROXIDASE
11528	4 x 50 mL	<i>Standard included</i>
11529	2 x 250 mL	Ready to use liquid reagent
TOTAL BILE ACIDS		
12551	1 x 24 mL	ENZYMATIC CYCLING <i>Standard included</i> Liquid reagents
UREA/BUN-COLOR		
11536	4 x 50 mL	UREASE/ SALICYLATE
11537	2 x 250 mL	<i>Standard included</i> Liquid reagents
UREA/BUN-UV		
11516	4 x 50 mL	UREASE/GLUTAMATE DEHYDROGENASE
11517	2 x 250 mL	<i>Standard included</i>
11541	1 x 1000 mL	Liquid reagents
URIC ACID		
11821	1 x 50 mL	URICASE/PEROXIDASE
11521	1 x 200 mL	<i>Standard included</i>
11522	1 x 500 mL	Ready to use liquid reagent
11540	1 x 1000 mL	
ZINC		
12526	1 x 50 mL	BROMO-PAPS <i>Standard included</i> Liquid reagents

NEW

NEW

TURBIDIMETRY

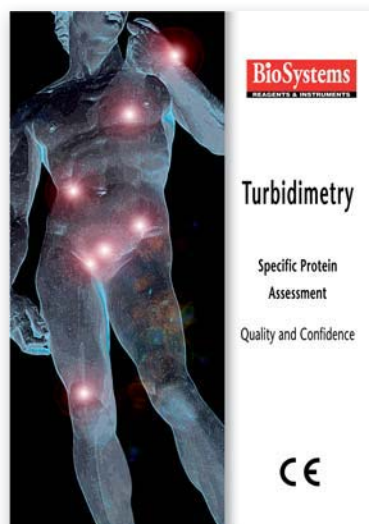
Code	Quantity	Method
ALBUMIN (MICROALBUMINURIA)		
31324	1 x 20 mL	LATEX
31924	1 x 50 mL	
ANTI-STREPTOLYSIN O (ASO)		
31323	1 x 20 mL	LATEX
31923	1 x 50 mL	
31031	2 x 200 mL	
ANTITHROMBIN III		
31936	1 x 50 mL	Ready to use, liquid reagent
APOLIPOPROTEIN A-I (Apo A-I)		
31095	1 x 50 mL	Ready to use, liquid reagent
APOLIPOPROTEIN B (Apo B)		
31098	1 x 50 mL	Ready to use, liquid reagent
α1-ACID GLYCOPROTEIN		
31928	1 x 50 mL	Ready to use, liquid single reagent
α1-MICROGLOBULIN		
31941	1 x 50 mL	Ready to use, liquid reagent
β2-MICROGLOBULIN		
31925	1 x 50 mL	LATEX
C-REACTIVE PROTEIN (CRP)		
31321	1 x 20 mL	LATEX
31921	1 x 50 mL	
31029	2 x 200 mL	
C-REACTIVE PROTEIN hs (CRP-hs)		
31927	1 x 50 mL	LATEX, HIGH SENSITIVITY
COMPLEMENT COMPONENT C3		
31073	1 x 50 mL	Ready to use, liquid single reagent
31079	1 x 250 mL	
COMPLEMENT COMPONENT C4		
31074	1 x 50 mL	Ready to use, liquid single reagent
31080	1 x 250 mL	

NEW

TURBIDIMETRY

Code	Quantity	Method
FERRITIN		
31934	1 x 15 mL	LATEX
31935	1 x 45 mL	
FIBRINOGEN		
31600	1 x 50 mL	Ready to use, liquid single reagent
IMMUNOGLOBULIN A (IgA)		
31071	1 x 50 mL	Ready to use, liquid single reagent
31077	1 x 250 mL	
IMMUNOGLOBULIN G (IgG)		
31070	1 x 50 mL	Ready to use, liquid single reagent
31076	1 x 250 mL	
IMMUNOGLOBULIN M (IgM)		
31072	1 x 50 mL	Ready to use, liquid single reagent
31078	1 x 250 mL	
PREALBUMIN		
31929	1 x 50 mL	Ready to use, liquid single reagent
RHEUMATOID FACTORS (RF)		
31322	1 x 20 mL	LATEX
31922	1 x 50 mL	
31030	2 x 200 mL	
TRANSFERRIN		
31091	1 x 20 mL	Ready to use, liquid single reagent
31092	1 x 50 mL	
31093	1 x 250 mL	

NEW



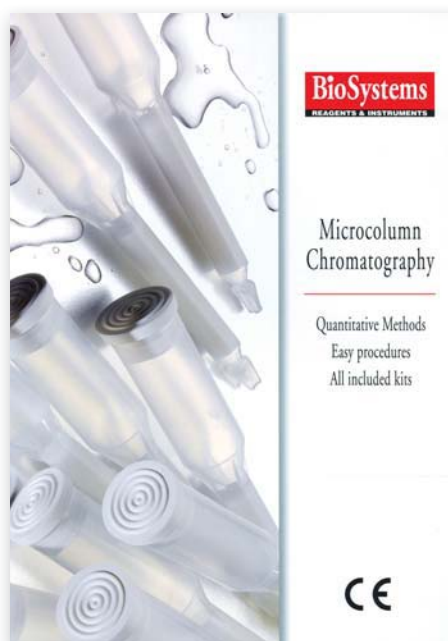
COAGULATION

Code	Quantity	Method
PROTHROMBIN TIME (PT)		
NEW 61001	4 x 5 mL	Rabbit Brain Thromboplastin
ACTIVATED PARTIAL THROMBOPLASTIN TIME (APTT)		
NEW 61004	4 x 4 mL	Rabbit Brain Cephalin and Micronized Silica
61005	4 x 16 mL	APTT B: CaCl ₂ buffered solution with stabilizer
FIBRINOGEN CLAUSS		
NEW 61002	4 x 2 mL	Human Thrombin
61003	4 x 15 mL	Fibrinogen B: stabilized Imidazol buffer solution
THROMBIN TIME (TT)		
NEW 61000	4 x 3 mL	Human Thrombin



MICROCOLUMN CHROMATOGRAPHY

Code	Quantity	Method
5-AMINOLEVULINIC ACID (ALA) / PORPHOBILINOGEN (PBG)		
11017	40 tests	EHRlich REAGENT <i>ALA Standard included</i>
HEMOGLOBIN A1C		
11044	20 tests	ION EXCHANGE TEMPERATURE INDEPENDENT
11045	100 tests	
HEMOGLOBIN A2		
11077	20 tests	ION EXCHANGE HbS INTERFERENCE FREE
11078	100 tests	
5-HYDROXYINDOLEACETIC ACID (5-HIAA)		
11010	40 tests	NITROSE NAFTOL <i>Standard included</i>
17-HYDROXYCORTICOSTEROIDS (17-OH)		
11006	40 tests	PORTER-SILBER <i>Standard included</i>
17-KETOSTEROIDS		
11002	40 tests	ZIMMERMANN <i>Standard included</i>
METANEPHRINES		
11022	40 tests	PISANO <i>Standard included</i>
VANILMANDELIC ACID		
11003	20 tests	PERIODATE <i>Standard included</i>



STANDARDS / CALIBRATORS

Code	Quantity	Components
ADENOSINE DEAMINASE (ADA) STANDARD		
18052	1 x 1 mL	Adenosine Deaminase (ADA)
ALBUMIN (MICROALBUMINURIA) STANDARD		
31130	1 x 1 mL	Albumin (microalbuminuria)
ANTI-STREPTOLYSIN O (ASO) STANDARD		
31119	1 x 1 mL	Anti-Streptolysin O (ASO)
APOLIPOPROTEIN A-I STANDARD		
31100	1 x 1 mL	Apolipoprotein A-I
APOLIPOPROTEIN B STANDARD		
31200	1 x 1 mL	Apolipoprotein B
CARBON DIOXIDE STANDARD		
11822	1 x 5 mL	Carbon Dioxide
COAGULATION CALIBRATOR		
61006	4 x 1 mL	Prothrombin Time (TP) and Fibrinogen
BIOCHEMISTRY CALIBRATOR		
18011	5 x 5 mL	ACP, Albumin, ALP, ALT/GPT, AST/GOT, α -Amylase, Total bilirubin, Total Bile Acids, Calcium, Cholesterol, Chloride, CK, Creatinine, Direct Bilirubin, Iron, LDH, Lipase, Glucose, γ -GT, Magnesium, Phosphorus, Potassium, Protein (total), Sodium, Triglycerides, Urea and Uric acid, Zinc.
BIOCHEMISTRY CALIBRATOR (HUMAN)		
18044	5 x 5 mL	ACP, Albumin, ALT/GPT, AST/GOT, ALP, α -Amylase, α -Amylase Pancreatic, Total Bilirubin, Creatinine, Calcium, Chloride, CK, γ -GT, Cholesterol, LDH, Lipase, LDL Cholesterol, HDL Cholesterol, Cholinesterase, Direct Bilirubin, Glucose, Iron, Triglycerides, Magnesium, Phosphorus, Potassium, Protein (total), Sodium, Urea and Uric acid, Zinc.
BILIRUBIN STANDARD		
11513	1 x 5 mL	Bilirubin
CRP/CRP-hs STANDARD		
31113	1 x 1 mL/5 mL	CRP and CRP-hs
FERRITIN STANDARD		
31127	1 x 3 mL	Ferritin
FIBRINOGEN STANDARD		
	1 x 1	Fibrinogen
HbA1C STANDARD		
13045	1 x 2 mL	HbA1C, Hb Total
CHOLESTEROL HDL/LDL CALIBRATOR		
11693	1 x 1 mL	HDL Cholesterol Direct/ LDL Cholesterol Direct
PROTEIN CALIBRATORS		
31075	5 x 1 mL	Set of five Levels Antithrombin III, α 1-Acid Glycoprotein, IgG, IgA, IgM, Complement C3, Complement C4, Prealbumin and Transferrin
PROTEIN (URINE) STANDARD		
11603	1 x 5 mL	Protein (Urine)
RHEUMATOID FACTORS (RF) STANDARD		
31116	1 x 3 mL	Rheumatoid Factor (RF)
α1-MICROGLOBULIN STANDARD		
31943	1 x 3 mL	α 1-Microglobulin
β2-MICROGLOBULIN STANDARD		
31122	1 x 1 mL	β 2-Microglobulin

The traceability of values assigned to calibrators and standards is assured through reference materials of a higher metrological order.



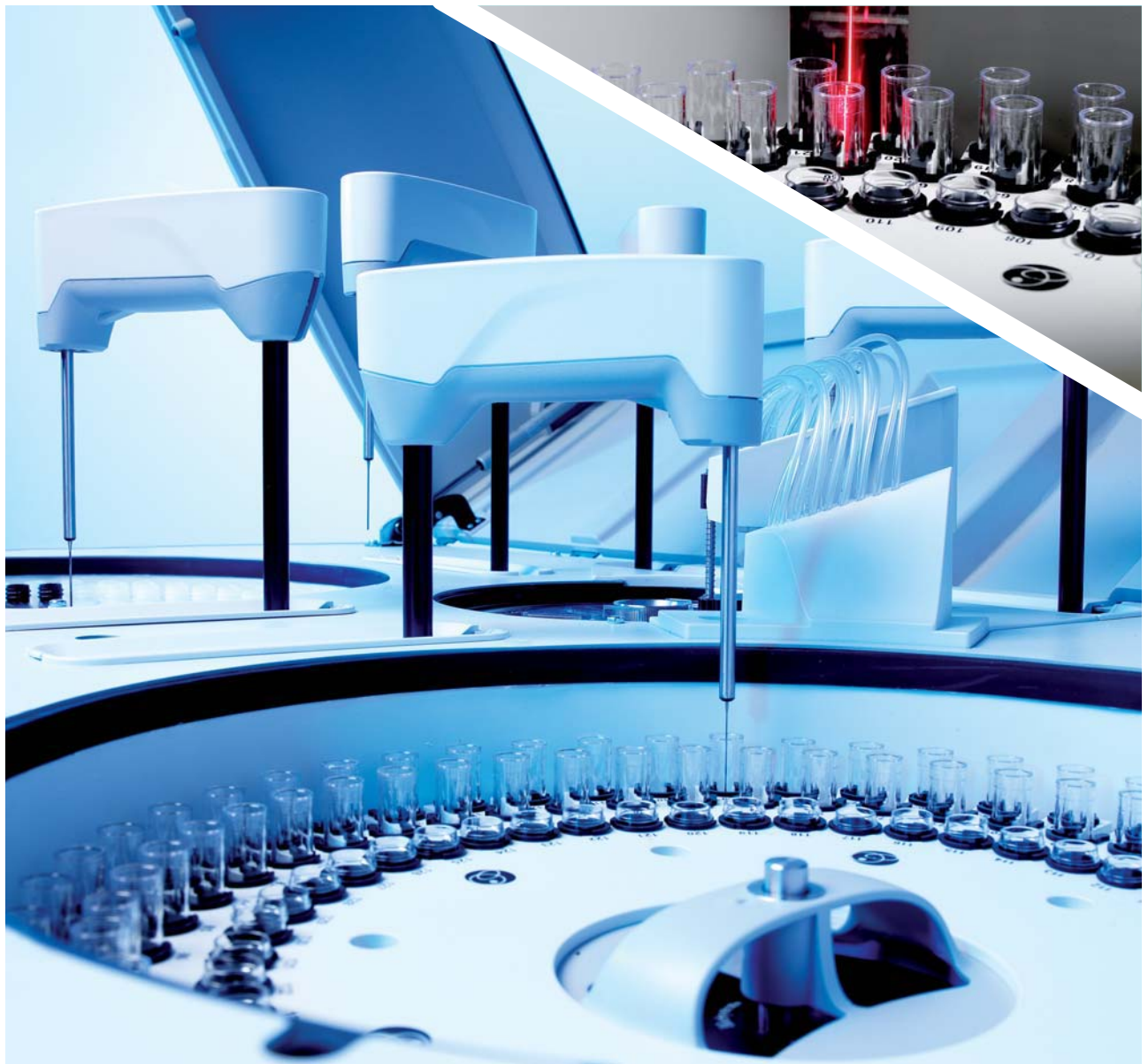
BTS **350**
SEMI-AUTOMATIC ANALYZER



Semi-Automatic Analyzer LED Technology

- LED configuration: 340, 405, 505, 535, 560, 600, 635, 670
- Durable, humidity proof Hard Coated Filters
- Battery Power Pack (2hrs)-OPTIONAL (AC14773)
- Photometric Range (0.0-3.5A) for all wavelengths
- Flow Cuvette 18ul
- Levy-Jennings QC chart (based on Westgard's Rules)
- Calibration by Factor, single calibrator or calibration curve
- Power 30 W

Code 80175



BA 400
LED TECHNOLOGY

Random Access Analyzer



- Throughput of 400 test/hour (Clinical Chemistry and Turbidimetry)
- Optical system based on LED technology that assures unlimited lifetime avoiding lamp replacement and improving sensitivity
- Photometric range up to 3.5Abs and internal resolution of 0.0001Abs
- Reference photodiode that eliminates the interference of scattering light
- Capacity up to 135 sample positions (90 samples with barcode)
- 88 Cooling reagents on board (5 - 8°C) by 20 and 60mL dedicated reagent bottles
- Easy STAT samples positioning. Non fixed positions for samples, control, calibrator nor STAT
- Barcode readers for sample and reagents
- High durability Ceramic pistons and Hard Coated Filters
- Low water consumption (Less than 14 L/h)
- ISE module, Na, K, Cl, Li (optional)
- Global System: Reagents and instruments manufacturer by BioSystems SA

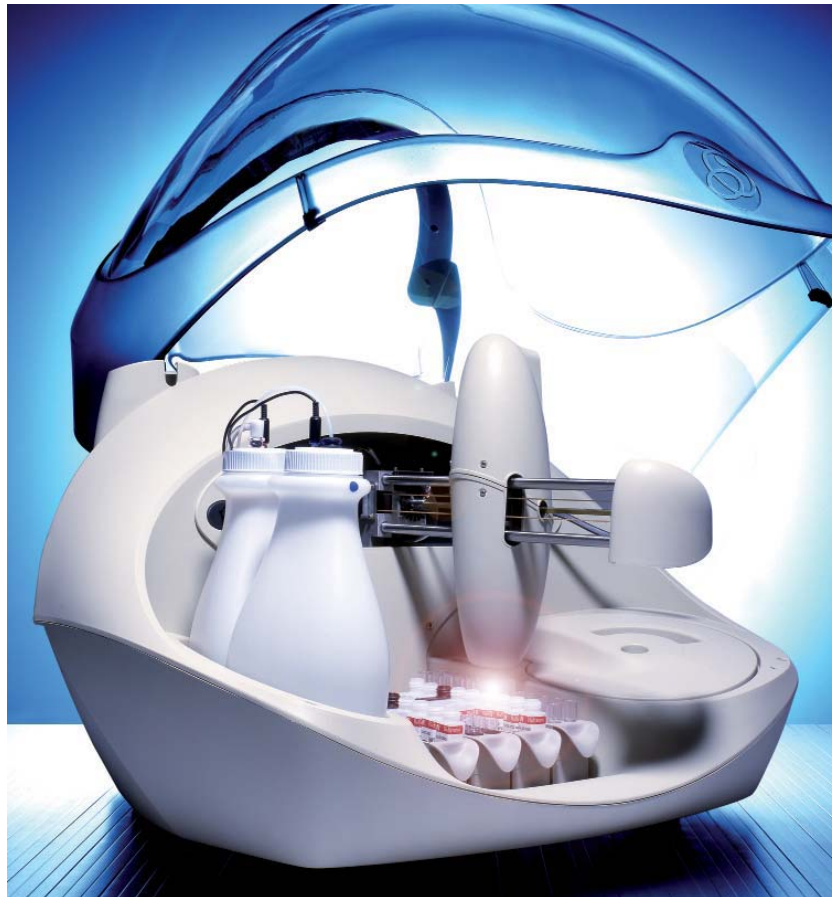
Code 83400



CONSUMABLES

Code	Presentation	Description
AC11485	10 units	Reaction rotors
AC16434	500 mL	Concentrated washing solution
A1K 1500	1 ud.	Power Supply Unit, 1500 VA
Electrodes	Presentation	Description
5201	1 ud.	Sodium (Na ⁺) electrode
5202	1 ud.	Potassium (K ⁺) electrode
5207	1 ud.	Chloride (Cl ⁻) electrode
5204	1 ud.	Reference electrode
5205	1 ud.	Lithium (Li ⁺) electrode
Reagents	Presentation	Description
5420		Reagent Pack Na/K/Cl/Li
5412	125 mL	Urine Diluent
5408	500 mL	Urine Diluent
5421		Cleaning Solution Kit

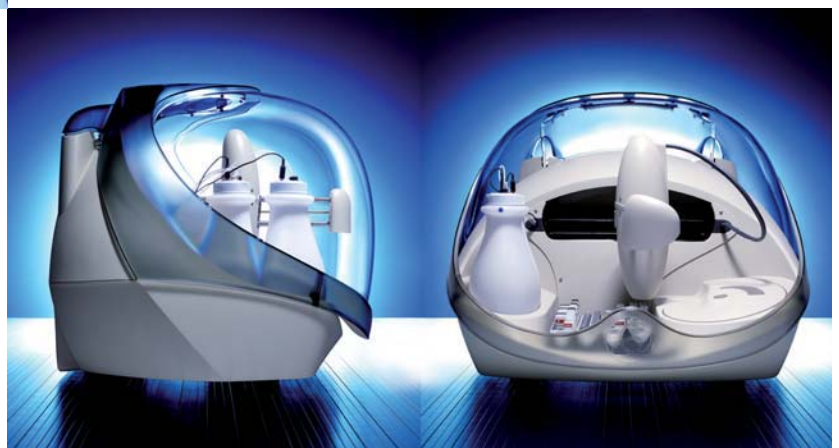
A15



Random Access Analyzer

- Innovative Design
- Low water consumption, less than 0,5 L/ hour
- Throughput of 150 tests/hour
- Minimum reading volume of 200 μ L
- Clinical Chemistry and Turbidimetry dedicated reagents
- Filter configuration 340, 405, 505, 535, 560, 600, 635, 670 nm.

Code 83105





Random Access Analyzer

- Throughput of 240 tests/hour
- Clinical Chemistry and Turbidimetry dedicated reagents
- 30 refrigerated positions by 20 and 50 mL reagents bottles
- Flexibility in positioning with sample and reagent racks
- Unlimited STAT capabilities. Run at any time
- Minimum reading volume of 200 μ L
- Filter configuration 340, 405, 505, 535, 560, 600, 635, 670 nm.
- Automatic conditioning of fluid system

Code 83101

CONSUMABLES

A15 - A25

Code	Presentation	Description
BO11524	1000 mL	Concentrated system liquid
BO13416	100 mL	Concentrated washing solution
AC11485	10 uds.	Reaction rotor
A1K110	1 ud.	Power Supply Unit, 110 VA
A1K220	1 ud.	Power Supply Unit, 220 VA

DEDICATED REAGENTS FOR BIOSYSTEMS INSTRUMENTS

Code	Test	Presentation	mL/Kit	
BIOCHEMISTRY				
		A25	A15	
		R1	R2	
12550	α -Amylase-Direct	5x20 mL	100	
12799	α -Amylase-Pancreatic	1x40 mL	1x10 mL	50
12754	Adenosine Deaminase (ADA)	4x8 mL	1x10 mL	40
12533	Alanine Aminotransferase (ALT/GPT)	5x40 mL	5x10 mL	250
12547	Albumin	5x50 mL	250	
12518	Alkaline Phosphatase (ALP)-AMP	5x16 mL	2x10 mL	100
12514	Alkaline Phosphatase (ALP)-DEA	5x16 mL	2x10 mL	100
12531	Aspartate Aminotransferase (AST/GOT)	5x40 mL	5x10 mL	250
12798	Bilirubin (Direct)	5x40 mL	5x10 mL	250
12510	Bilirubin (Total)	5x40 mL	5x10 mL	250
12570	Calcium-Arsenazo	10x50 mL		500
12513	Calcium-Cresolphthalein	5x40 mL	5x10 mL	250
12558	Carbon Dioxide (CO ₂)	5x50 mL		250
11795	Citrate*	1x40 mL	1x10 mL	50
12505	Cholesterol	10x50 mL		500
12557	Cholesterol HDL Direct	3x20 mL	1x20 mL	80
12585	Cholesterol LDL Direct	3x20 mL	1x20 mL	80
12524	Creatine Kinase (CK)	3x12 mL	1x10 mL	45
12566	Creatine Kinase-MB (CK-MB)	3x12 mL	1x10 mL	45
12502	Creatinine	5x50 mL	5x50 mL	500
11794	Fructose*	1x40 mL	1x10 mL	50
12520	γ -Glutamyltransferase (γ -GT)	5x40 mL	5x10 mL	250
12503	Glucose	10x50 mL		500
12756	Glucose-Hexokinase	2x40 mL	2x10 mL	100
12509	Iron-Ferrozine	5x40 mL	5x10 mL	250
12580	Lactate Dehydrogenase (LDH)	5x40 mL	5x10 mL	250
12793	Lipase	2x20 mL	1x8 mL	48
12797	Magnesium	5x16 mL	2x10 mL	100
12508	Phosphorus	3x24 mL	2x15 mL	100
12500	Protein (Total)	10x50 mL		500
12501	Protein (Urine+CSF)*	5x50 mL		250
12551	Total Bile Acids*	1x18 mL	1x6 mL	24
12528	Triglycerides	10x50 mL		500
12516	Urea/BUN-UV	5x40 mL	5x10 mL	250
12521	Uric Acid	10x50 mL		500
12526	Zinc*	2x20 mL	1x10 mL	500

*Standard included

DEDICATED REAGENTS FOR BIOSYSTEMS INSTRUMENTS

Code	Test	Presentation	mL/Kit	
TURBIDIMETRY				
		A25	A15	
		R1	R2	
13324	Albumin (Microalbuminuria)	1x40 mL	1x10 mL	50
13923	Anti-Streptolysin O (ASO)	1x40 mL	1x10 mL	50
13936	Antithrombin III	1x40 mL	1x10 mL	50
13084	Complement Component C3	1x50 mL		50
13085	Complement Component C4	1x50 mL		50
13921	C-Reactive Protein (CRP)	2x40 mL	2x10 mL	100
13927	C-Reactive Protein-hs (CRP-hs)	1x40 mL	1x10 mL	50
13934	Ferritin	1x30 mL	1x15 mL	45
NEW 13600	Fibrinogen	1x40 mL	1x10 mL	50
13044	Hemoglobin A1C-Turbi (Hb A1C-Turbi)	1x40 mL	1x10 mL	50
13082	Immunoglobulin A (IgA)	1x50 mL		50
13081	Immunoglobulin G (IgG)	1x50 mL		50
13083	Immunoglobulin M (IgM)	1x50 mL		50
13922	Rheumatoid Factors (RF)	1x40 mL	1x10 mL	50
13091	Transferrin	1x50 mL		50



DEDICATED REAGENTS FOR BIOSYSTEMS INSTRUMENTS

Code	Test	Presentation	mL/Kit	
		R1	R2	
21550	α -Amylase-Direct	8x20 mL	160	
21534	α -Amylase-EPS	2x60 mL	2x15 mL	150
21799	α -Amylase Pancreatic	2x60 mL	2x15 mL	150
21533	Alanine Aminotransferase (ALT/GPT)	8x60 mL	8x15 mL	600
21547	Albumin	10x60 mL		600
21592	Alkaline Phosphatase (ALP)-AMP	4x60 mL	4x15 mL	300
21590	Alkaline Phosphatase (ALP)-DEA	4x60 mL	4x15 mL	300
21531	Aspartate Aminotransferase (AST/GOT)	8x60 mL	8x15 mL	600
21798	Bilirubin (Direct)	4x60 mL	3x20 mL	300
21510	Bilirubin (Total)	8x60 mL	8x15 mL	600
21570	Calcium-Arsenazo	10x60 mL		600
NEW 21511	Calcium-Cresolphthalein	8x60 mL	8x15 mL	600
NEW 21558	Carbon Dioxide (CO₂)	2x60 mL		120
21505	Cholesterol	10x60 mL		600
21557	Cholesterol HDL Direct	2x60 mL	2x20 mL	160
21585	Cholesterol LDL Direct	2x60 mL	2x20 mL	160
NEW 21588	Cholinesterase (CHE)	2x60 mL	2x15 mL	150
21790	Creatine Kinase (CK)	2x60 mL	2x15 mL	150
21792	Creatine Kinase-MB (CK-MB)	2x60 mL	2x15 mL	150
21502	Creatinine	5x60 mL	5x60 mL	600
21520	γ -Glutamyltransferase (γ -GT)	4x60 mL	4x15 mL	300
21503	Glucose	10x60 mL		600
21656	Glucose-Hexokinose	4x60 mL	4x15 mL	300
21509	Iron-Ferrozine	4x60 mL	4x15 mL	300
21580	Lactate Dehydrogenase (LDH)	8x60 mL	8x15 mL	600
21586	Lactate Dehydrogenase (LDH)-IFCC	8x60 mL	8x15 mL	600
21793	Lipase	2x50 mL	1x20 mL	120
21797	Magnesium	2x60 mL	2x15 mL	150
21508	Phosphorus	4x60 mL	2x50 mL	340
21500	Protein (Total)	10x60 mL		600
21501	Protein (Urine+CSF)	4x60 mL		240
21528	Triglycerides	10x60 mL		600
NEW 21551	Total Bile Acids	2x60 mL	2x20 mL	160
21516	Urea/BUN-UV	8x60 mL	8x15 mL	600
21521	Uric Acid	10x60 mL		600

DEDICATED REAGENTS FOR BIOSYSTEMS INSTRUMENTS

Code	Test	Presentation	mL/Kit
------	------	--------------	--------

TURBIDIMETRY



R1

R2

22324	Albumin (Microalbuminuria)	4x60 mL	4x15 mL	300
22923	Anti-Streptolysin O (ASO)	2x60 mL	2x15 mL	150
22936	Antithrombin III	2x60 mL	2x15 mL	150
22928	α -1-Acid Glycoprotein	2x60 mL		120
NEW 22941	α-1-Microglobulin	2x60 mL	2x15 mL	150
22095	Apolipoprotein A-I (APO A-I)	2x60 mL	2x15 mL	150
22098	Apolipoprotein B (APO B)	2x60 mL	2x15 mL	150
22925	β 2-Microglobulin	2x60 mL	2x15 mL	150
22084	Complement Component C3	2x60 mL		120
22085	Complement Component C4	2x60 mL		120
22921	C-Reactive Protein (CRP)	4x60 mL	4x15 mL	300
22927	C-Reactive Protein-hs (CRP-hs)	2x60 mL	2x15 mL	150
22934	Ferritin	2x40 mL	2x20 mL	120
NEW 22804	Fibrinogen	2x60 mL	2x15 mL	150
NEW 22044	Hemoglobin A1C-Turbi (Hb A1C-Turbi)	1x60 mL	1x15 mL	75
22082	Immunoglobulin A (Ig A)	2x60 mL		120
22081	Immunoglobulin G (Ig G)	2x60 mL		120
22083	Immunoglobulin M (Ig M)	2x60 mL		120
22929	Prealbumin	2x60 mL		120
22922	Rheumatoid Factors (RF)	4x60 mL	4x15 mL	300
22091	Transferrin	2x60 mL		120



Suitable for use also on Olympus AU 400/AU 480/640/800/2700/5400, Hitachi 917, Advia 1650/1800/2400, DIRUI CS 800/600/400/300/240. Ask your distributor for additional information.

DEDICATED REAGENTS FOR INSTRUMENTS

Code	Test	Presentation		mL/Kit
BIOCHEMISTRY XL Analyzers				
		R1	R2	
14534	α -Amylase-EPS	4x30 mL	4x7,5 mL	150
14799	α -Amylase-Pancreatic	1x40 mL	1x10 mL	50
14533	Alanine Aminotransferase (ALT/GPT)	6x40 mL	6x10 mL	300
14547	Albumin	6x45 mL		270
14514	Alkaline Phosphatase (ALP)-DEA	4x40 mL	4x10 mL	200
14531	Aspartate Aminotransferase (AST/GOT)	6x40 mL	6x10 mL	300
14798	Bilirubin (Direct)	6x40 mL	6x10mL	300
14510	Bilirubin (Total)	6x40 mL	6x10mL	300
14570	Calcium-Arsenazo	6x45 mL		270
NEW 14513	Calcium-Cresolphthlein	6x40 mL	6x10mL	300
NEW 14558	Carbon Dioxide (CO2)	6x50 mL		300
14505	Cholesterol	6x45 mL		270
14557	Cholesterol HDL Direct	3x20 mL	2x10 mL	80
14585	Cholesterol LDL Direct	3x20 mL	2x10 mL	80
14588	Cholinesterase (CHE)	1x40 mL	1x10 mL	50
14524	Creatine Kinase (CK)	5x8 mL	1x10 mL	50
14792	Creatine Kinase-MB (CK-MB)	3x12 mL	1x10 mL	46
14502	Creatinine	4x50 mL	4x50 mL	400
14520	γ -Glutamyltransferase (γ -GT)	6x30 mL	6x7,5 mL	225
14503	Glucose	6x45 mL		270
14509	Iron Ferrozine	6x40 mL	6x10 mL	300
14580	Lactate Dehydrogenase (LDH)	4x16 mL	4x4 mL	80
14793	Lipase	2x20 mL	1x8 mL	48
14797	Magnesium	5x16 mL	2x10 mL	100
14508	Phosphorus	5x25 mL	5x10 mL	175
14500	Protein (Total)	6x45 mL		270
14528	Triglycerides	6x45 mL		270
14516	Urea/BUN-UV	6x40 mL	6x10 mL	300
14521	Uric Acid	6x45 mL		270

DEDICATED REAGENTS FOR INSTRUMENTS

Code	Test	Presentation		mL/Kit
TURBIDIMETRY				
XL Analyzers				
		R1	R2	
14324	Albumin (Microalbuminuria)	1x40 mL	1x10 mL	50
14928	α -1-Acid Glycoprotein	1x50 mL		50
14923	Anti-Streptolysin O (ASO)	1x40 mL	1x10 mL	50
14936	Antithrombin III	1x40 mL	1x10 mL	50
14084	Complement Component C3	1x50 mL		50
14085	Complement Component C4	1x50 mL		50
14921	C-Reactive Protein (CRP)	1x40 mL	1x10 mL	50
14927	C-Reactive Protein-hs (CRP-hs)	1x40 mL	1x10 mL	50
14934	Ferritin	1x30 mL	1x15 mL	45
NEW 14600	Fibrinogen	1x40 mL	1x10 mL	50
14082	Immunoglobulin A (IgA)	1x50 mL		50
14081	Immunoglobulin G (IgG)	1x50 mL		50
14083	Immunoglobulin M (IgM)	1x50 mL		50
14922	Rheumatoid Factors (RF)	1x40 mL	1x10 mL	50
14091	Transferrin	1x50 mL		50



QUALITY CONTROL

INTERNAL QUALITY CONTROL

Code	Quantity	Level	Components
ADA CONTROLS			
18048	2 x 1 mL	LEVEL I and II	Adenosine Deaminase
BIOCHEMISTRY CONTROL SERUM			
18009	5 x 5 mL	LEVEL I	ACP, Albumin, ALP, ALT/GPT, AST/GOT, α -Amylase, Direct and Total Bilirubin, Total Bile Acids, Calcium, Chloride, Cholesterol, HDL-Cholesterol, CK, Creatinine, Glucose, γ -GT, Iron, LDH, Lipase
18005	20 x 5 mL		
18010	5 x 5 mL	LEVEL II	Magnesium, Phosphorus, Potassium, Protein Total, Sodium, Triglycerides, Urea, Uric acid, Zinc.
18007	20 x 5 mL		
BIOCHEMISTRY CONTROL SERUM (HUMAN)			
18042	5 x 5 mL	LEVEL I	ACP, Albumin, ALP, ALT/GPT, AST/GOT, α -Amylase, α -Amylase Pancreatic, Direct and Total Bilirubin, Calcium, Chloride, Cholesterol, Cholesterol-HDL, Cholesterol-LDL, Cholinesterase, CK, Creatinine, Glucose, γ -GT, Iron, LDH, Lipase, Magnesium, Phosphorus, Potassium, Protein total, Sodium, Triglycerides, Urea, Uric acid, Zinc
18043	5 x 5 mL	LEVEL II	
BIOCHEMISTRY CONTROL URINE			
18054	1 x 5 mL		Albumin, α -Amylase, α -Amylase Pancreatic, Calcium, Chloride, Citrate, Creatinine, Glucose, Magnesium, Phosphorus, Potassium, Protein urine, Sodium, Urea and Uric acid
FERTILITY BIOCHEMISTRY CONTROL			
18053	1 x 1 mL		Citrate, Fructose and Zinc
FIBRINOGEN CONTROL			
31602	1 x 1 mL		Fibrinogen
CARBON DIOXIDE CONTROL			
11826	1 x 2 mL		Carbon dioxide
CK-MB CONTROL SERUM			
18024	1 x 0.5 mL		CK, and CK-MB
COAGULATION CONTROL			
61007	4 x 1 mL	LEVEL I	PT, APTT, TT and Fibrinogen
61008	4 x 1 mL	LEVEL II	
CONTROL URINE			
18036	1 x 20 mL		Albumin, 5-Aminolevulinic acid, 5-Hydroxyindoleacetic acid, 17 Hydroxycorticosteroids, 17-Ketosteroids, Metanephrines, Protein and Vanilmandelic acid.
18037	10 x 20 mL		
HEMOGLOBIN A1C CONTROL			
18001	1 x 0.5 mL	NORMAL	HbA1C (chromatography, turbidimetry)
18002	1 x 0.5 mL	ELEVATED	
HEMOGLOBIN A2 CONTROL			
10011	1 x 0.5 mL	ELEVATED	HbA2 (chromatography)
LIPID CONTROL SERUM			
18040	3 x 1 mL	LEVEL I	Apolipoprotein A-I, Apolipoprotein B, Cholesterol, Cholesterol-HDL, Cholesterol-LDL and Triglycerides
18041	3 x 1 mL	LEVEL II	
PROTEIN CONTROL SERUM			
31211	3 x 1 mL	LEVEL I	Antithrombin III, α 1-Acid Glycoprotein, Complement C3, Complement C4, C-Reactive Protein-hs, Ferritin, IgG, IgA, IgM, Prealbumin and Transferrin
31212	3 x 1 mL	LEVEL II	
RHEUMATOID CONTROL SERUM			
31213	3 x 1 mL	LEVEL I	Anti-Streptolysin O, C-Reactive Protein, Rheumatoid Factors
31214	3 x 1 mL	LEVEL II	

PREVECAL www.prevecal.net

International External Quality Assessment Scheme

- Yearly program for the comparison of results between laboratories. More than 3000 laboratories worldwide
- Monthly measurements of different control materials
- The final report summarises all monthly reports and shows additional data on performance and capability
- 6-sigma quality management for the assessment for each measurement procedure of the laboratory
- On-line participation through www.prevecal.net

Code	Quantity	Components
CLINICAL CHEMISTRY		
PREVECAL BIOCHEMISTRY (BOVINE)		
18027	12 x 5 mL	ACP, Albumin, ALP, ALT/GPT, AST/GOT, a-Amylase, Total Bilirubin, Calcium, Chloride, Cholesterol, HDL-Cholesterol, Cholinesterase, CK, Creatinine, Glucose, γ -GT, Iron, LDH, Lipase, Magnesium, Phosphorus, Potassium, Proteins, Sodium, Triglycerides, Urea and Uric acid.
PREVECAL BIOCHEMISTRY HUMAN		
18045	12 x 5 mL (human sera)	ALT, Albumin, α -amylase, AST, Direct and Total Bilirubin, Calcium, Chloride, Cholesterol, Cholinesterase, HDL-cholesterol, CK, Creatinine, Acid Phosphatase, Alkaline Phosphatase, Phosphorus, Glucose, γ -GT, Iron, LDH, LDL-cholesterol, Lipase, Magnesium, Potassium, Proteins, Sodium, Triglycerides, Uric Acid and Urea
PREVECAL RHEUMA		
31009	12 x 1 mL (human sera)	Anti-streptolysin O, C-reactive Protein and Rheumatoid Factors
PREVECAL PROTEINS		
31010	12 x 1 mL (human sera)	α 1-Acid Glycoprotein, Immunoglobulins (A, G and M), Complements C3 and C4, Ferritin, Prealbumin and Transferrin
AUTOIMMUNITY		
PREVECAL ANA		
18046	12 x 0.3 mL	Antinuclear antibodies
PREVECAL ANCA		
18056	4 x 0.3 mL	ANCA
PREVECAL nDNA		
18047	12 x 0.3 mL	Anti-nDNA antibodies
PREVECAL CELIAC		
18051	4 x 0.3 mL	Anti-endomysium, anti-tTG, anti-Gliadin, and DGP antibodies

All kits include general instructions and cards for results

SUPPORT MATERIAL

Code **Characteristics**

BOOKS

"QUALITY CONTROL IN THE CLINICAL LABORATORY"

99563 Spanish
99653 English

"METROLOGY IN THE CLINICAL LABORATORY" 2nd Edition

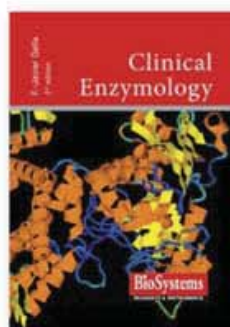
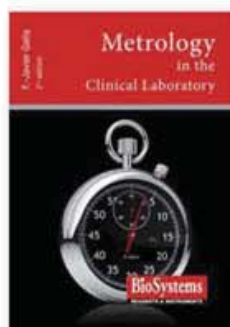
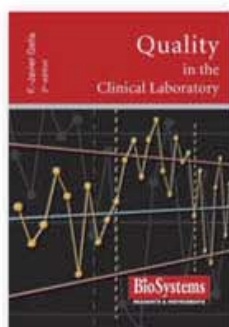
99644 Spanish
99733 English

"CLINICAL ENZYMOLOGY"

99702 Spanish
99730 English

"IMMUNOFLUORESCENCE PATTERNS IN AUTOIMMUNITY"

99698 English



POSTERS

"INTERNAL QUALITY CONTROL "

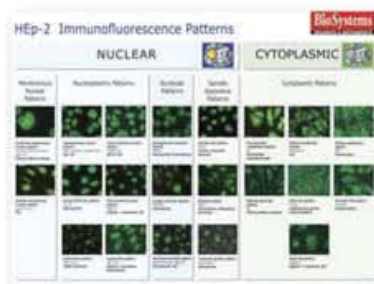
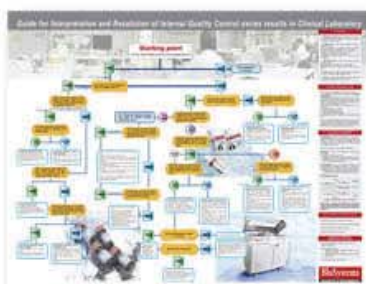
99734 Spanish
99790 English

"HEP-2 IMMUNOFLUORESCENCE PATTERNS"

99729 English

"REFERENCE VALUES AND CLINICAL SIGNIFICANCE"

99807 English
99806 Spanish





AUTOIMMUNITY

IMMUNOFLUORESCENCE

Code	Quantity	Description
ANTI-NUCLEAR ANTIBODIES HEp-2 (ANA-HEp-2)		
44108	24 tests	HEp-2 cells Complete kit, 6 wells
44508	60 tests	Complete kit, 6 wells
44509	120 tests	Complete kit, 12 wells
44546	10 slides	Slide box, 6 wells
44547	10 slides	Slide box, 12 wells
ANTI-nDNA ANTIBODIES (nDNA)		
44825	24 tests	<i>Crithidia luciliae</i> Complete kit, 6 wells
44818	60 tests	Complete kit, 6 wells
44817	120 tests	Complete kit, 12 wells
44820	10 slides	Slide box, 6 wells
44819	10 slides	Slide box, 12 wells
ANTI-NEUTROPHIL CYTOPLASMIC ANTIBODIES (ANCA)		
44850	24 tests	Ethanol fixed ANCA Complete kit, 6 wells
44851	60 tests	Complete kit, 6 wells
44852	10 slides	Slide box, 6 wells
44878	10 slides	Formalin fixed ANCA Slide box, 6 wells
44898	60 tests	Complete kit, 6 wells
44895	10 slides	Methanol fixed ANCA Slide box, 6 wells
ANTI-ENDOMYSIUM ANTIBODIES (AEA)		
44548	48 tests	Monkey Esophagus (Endomysium) Complete kit, 4 wells
44715	96 tests	Complete kit, 8 wells
44557	12 slides	Slide box, 4 wells
44710	12 slides	Slide box, 8 wells
AUTOANTIBODIES RL/RK/RS (ANA-AMA-ASMA-APCA-LKM)		
44558	48 tests	Rat Liver/Kidney/Stomach Complete kit, 4 wells
44648	96 tests	Complete kit, 8 wells
44570	12 slides	Slide box, 4 wells
44639	12 slides	Slide box, 8 wells
AUTOANTIBODIES MsL/MsK/MsS (ANA-AMA-ASMA-APCA-LKM)		
44826	12 slides	Mouse Liver/Kidney/Stomach Slide box, 4 wells
44827	12 slides	Slide box, 8 wells
ANTI-MITOCHONDRIAL ANTIBODIES (AMA)		
44510	48 tests	Rat Kidney Complete kit, 4 wells
44514	96 tests	Complete kit, 8 wells
44511	12 slides	Slide box, 4 wells.
44515	12 slides	Slide box, 8 wells.
ANTI-SMOOTH MUSCLE ANTIBODIES (ASMA)		
44520	48 tests	Rat Stomach Complete kit, 4 wells
44524	96 tests	Complete kit, 8 wells
44521	12 slides	Slide box, 4 wells
44525	12 slides	Slide box, 8 wells
GLOMERULAR BASEMENT MEMBRANE ANTIBODIES (GBMA)		
44588	12 slides	Monkey kidney Slide box, 4 wells

IMMUNOFLUORESCENCE

Code	Quantity	Description
ANTI-ADRENAL CORTEX ANTIBODIES (AACA)		
44574	12 slides	Monkey Adrenal Slide box, 4 wells
ANTI-STRIATED MUSCLE ANTIBODIES (AStMA)		
44649	12 slides	Rat striated muscle Slide box, 4 wells
ANTI-ISLET CELL ANTIBODIES (AICA)		
44609	48 tests	Monkey Pancreas Complete kit, 4 wells*
44572	12 slides	Slide box, 4 wells
ANTI-THYROID ANTIBODIES (ATA)		
44550	48 tests	Monkey Thyroid Complete kit 4 wells
44551	12 slides	Slide box, 4 wells
ANTI-SKIN ANTIBODIES (ASA)		
44560	48 tests	Monkey Esophagus Complete kit, 4 wells*
44561	12 slides	Slide box, 4 wells
ANTI-KERATIN ANTIBODIES (AKA)		
44618	48 tests	Rat Esophagus Complete kit, 4 wells*
44517	12 slides	Slide box, 4 wells
AUTOANTIBODIES DUO		
44874	60 tests	HEp2/ML. Slide box, 6 wells
TISSUE SLIDES FOR RESEARCH USE ONLY (RUO)		
44571		Monkey Heart
44679		Monkey Stomach
44573		Monkey Ovary
44685		Monkey Sciatic Nerve
44687		Monkey Brain
44684		Monkey Cerebellum
44589		Monkey Hypophysis
44688		Monkey Jejunum
44638		Monkey Submaxillary
44566		Monkey Testicle
44516		Rat Colon
44527		Rat Sciatic Nerve

**Controls not included. Sale of controls is subject to availability*

IMMUNOFLUORESCENCE

Code	Quantity	Description
------	----------	-------------

Conjugates for Monkey tissues

IgG FITC/EVANS (M)		
44847	3.5 mL	Anti-(Monkey adsorbed) IgG FITC conjugate, contains Evans Blue
44882	10 mL	For use with AEA, GBMA, AICA, ATA, ASA and AACA
IgA FITC/EVANS		
44692	3.5 mL	Anti-IgA FITC conjugate, contains Evans Blue
44835	10 mL	For use with AEA

Conjugates for Rat and Mouse tissues

FITC/EVANS (R)		
44590	3.5 mL	(Rat adsorbed) Anti-IgG, IgA, IgM FITC conjugate, contains Evans Blue
44836	10 mL	For use with Autoantibodies Screening, AMA and ASMA

Conjugates for HEp-2, nDNA and ANCA

IgG FITC/EVANS		
44697	3 mL	Anti-IgG FITC conjugate, contains Evans Blue
44834	10 mL	For use with HEp-2, nDNA, ANCA AStMA and AKA

Auxiliary Reagents

Miscellaneous		
44846	10 mL	Glycin (for GBMA)
44592	100 mL	PBS (10x)
44694	3 mL	Mounting medium
44897	100 u.	Coverslips (24 x 60 mm)

Immunofluorescence Controls*

44696	0.3 mL	Negative Control
44889	2.0 mL	Negative Control
44730	0.3 mL	Anti-Nuclear Antibodies-Homogeneous Positive Control
44888	2.0 mL	Anti-Nuclear Antibodies-Homogeneous Positive Control
44585	0.3 mL	Anti-Nuclear Antibodies-Centromere Positive Control
44504	0.3 mL	Anti-Nuclear Antibodies-Nucleolar Positive Control
44503	0.3 mL	Anti-Nuclear Antibodies-Speckled Positive Control
44549	0.3 mL	Anti-Endomysium Antibodies Positive Control
44893	2.0 mL	Anti-Endomysium Antibodies Positive Control
44512	0.3 mL	Anti-Mitochondrial Antibodies Positive Control
44891	2.0 mL	Anti-Mitochondrial Antibodies Positive Control
44522	0.3 mL	Anti-Smooth Muscle Antibodies Positive Control
44892	2.0 mL	Anti-Smooth Muscle Antibodies Positive Control
44553	0.3 mL	Anti-Thyroid Antibodies Positive Control
44542	0.3 mL	Anti-nDNA Antibodies Positive Control
44894	2.0 mL	Anti-nDNA Antibodies Positive Control
44854	0.3 mL	C-ANCA Positive Control
44855	0.3 mL	P-ANCA Positive Control
44896	0.3 mL	X-ANCA Positive Control

*Sale of controls is subject to availability

ELISA

Code	Quantity	Description
ANA-SCREENING		
44785	96 tests	Purified SSA(Ro), SSB(La), Sm/RNP, RNP (70, A and C), Sm, Scl70, Jo1, dsDNA, ssDNA, nucleosomes, total histones, PMScl 100, Centromere B
ENA 6-SCREENING		
44740	96 tests	SSA (Ro), SSB (La), Sm, Sm/RNP, Jo1, Scl70
ENA 4-PROFILE		
44775	96 tests	Highly purified SSA, SSB, Sm, Sm/RNP
ENA 6-PROFILE		
44910	96 tests	Highly purified SSA (Ro), SSB (La), Sm, Sm/RNP, Jo1, Scl70
ANTI-Sm ANTIBODIES		
44755	96 tests	Highly purified Human antigen
ANTI-Sm/RNP ANTIBODIES		
44770	96 tests	Highly purified Human antigen
ANTI-SSA (Ro) ANTIBODIES		
44765	96 tests	Highly purified antigen
ANTI-SSB (La) ANTIBODIES		
44750	96 tests	Highly purified antigen
ANTI-CENTROMERE B ANTIBODIES (CENP-B)		
44865	96 tests	Recombinant antigen
ANTI-Jo1 ANTIBODIES		
44864	96 tests	Highly purified antigen
ANTI-Scl70 ANTIBODIES		
44863	96 tests	Highly purified antigen
ANTI-RIBOSOMAL P ANTIBODIES (Rib P)		
44866	96 tests	Highly purified antigen
ANTI-HISTONES ANTIBODIES (HIST)		
44862	96 tests	Highly purified antigen
ANTI-NUCLEOSOME ANTIBODIES (NCL)		
44861	96 tests	Purified antigen
ANTI-dsDNA ANTIBODIES		
44705	96 tests	Calf thymus antigen
ANTI-CITRULLINATED PROTEIN ANTIBODIES (ACPA)		
44860	96 tests	Highly purified antigen
ANTI-CARDIOLIPIN ANTIBODIES (ACA-IgG/IgM)		
44780	96 tests	Highly purified antigen
ANTI-PHOSPHOLIPID ANTIBODIES IgG/IgM (APLA)		
44867	96 tests	Mixture of cardiolipin, phosphatidyl serine, phosphatidyl inositol, phosphatidic acid and human β 2-Glycoprotein 1
ANTI-β2-GLYCOPROTEIN 1 ANTIBODIES IgG/IgM (β2-GP1)		
44868	96 tests	Highly purified antigen

NEW

ELISA

Code	Quantity	Method
ANTI-ANNEXIN V ANTIBODIES IgG/IgM (ANX)		
44869	96 tests	Highly purified antigen
ANTI-PR3 ANTIBODIES (C-ANCA)		
44791	96 tests	Purified human antigen
ANTI-MPO ANTIBODIES (P-ANCA)		
44790	96 tests	Purified human antigen
ANTI-BPI ANTIBODIES		
44905	96 tests	Purified human antigen
ANTI-CATHEPSIN G ANTIBODIES		
44906	96 tests	Purified antigen
ANTI-ELASTASE ANTIBODIES		
44907	96 tests	Purified antigen
ANTI-LACTOFERRIN ANTIBODIES		
44908	96 tests	Purified human antigen
ANTI-LYSOZYME ANTIBODIES		
44909	96 tests	Purified human antigen
ANTI-GLOMERULAR BASEMENT MEMBRANE ANTIBODIES (GBM)		
44870	96 tests	Highly purified antigen
ANTI-tTRANSGLUTAMINASE IgA ANTIBODIES (Anti-tTG IgA)*		
44754	96 tests	Recombinant human antigen activated by calcium and gliadin
ANTI-tTRANSGLUTAMINASE IgG ANTIBODIES (Anti-tTG IgG)*		
44798	96 tests	Recombinant human antigen activated by calcium and gliadin
ANTI-GLIADIN ANTIBODIES (AGA-IgG/IgA)		
44704	96 tests	Gliadin
ANTI-DEAMIDATED GLIADIN (DGP-IgG)		
44884	96 tests	Synthetic deamidated gliadin
ANTI-DEAMIDATED GLIADIN (DGP-IgA)		
44885	96 tests	Synthetic deamidated gliadin
ANTI-SACCHAROMYCES CEREVISIAE ANTIBODIES IgG/IgA (ASCA)		
44872	96 tests	Highly purified mannan from <i>Saccharomyces cerevisiae</i>
ANTI-THYROID PEROXIDASE ANTIBODIES (anti-TPO)		
44795	96 tests	Recombinant human thyroid Peroxidase
ANTI-THYROGLOBULIN ANTIBODIES (anti-TG)		
44796	96 tests	Highly purified human antigen
ANTI-INSULIN ANTIBODIES		
44873	96 tests	Mixture of recombinant and purified insulin
ANTI-M2 ANTIBODIES (M2)		
44871	96 tests	Highly purified mitochondrial M2 subtype antigen

**Available only in some countries*



IMMUNOFLUORESCENCE PROCESSOR

- **Sample volume** 3 μ L minimum
- **Sample tray** Interchangeable racks (13mm x 100 mm, 15 mm x 100 mm or 2 mL)
- **Dilution tray** 96 vials (1.2 mL)
- **Slides (plates)** 16 (2)
- **Reagent tray** 8 conjugates (15 mL), 15 controls (2 mL), 1 additional diluent (50 mL)
- **Reagents reservoirs** 1 L bottle of washing solution, 1 L waste bottle, 1 L buffer bottle
- **Level sensor probe** Conductive
- **Slide washing** Flux system utilizing simultaneous dispensing and aspirating probes
- **Barcode reader** Hand-held barcode reader

Code 84101

CONSUMABLES

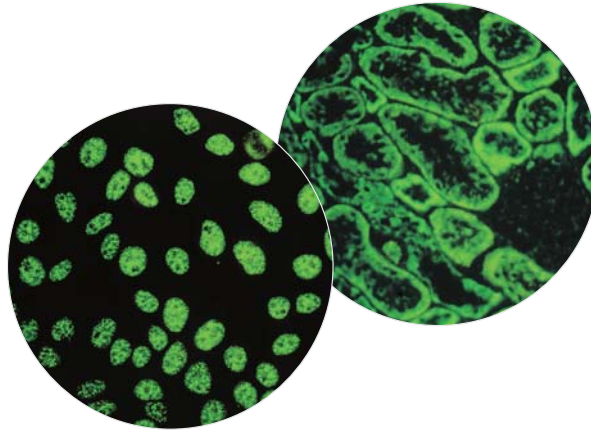
Code	Presentation	Description
44592	100 mL	PBS (10x)
BO13416	100 mL	Concentrated Washing Solution
AC14682	120 strips	iPro Dilution Tubes (1,1mL)



FLUORESCENCE MICROSCOPE (LED TECHNOLOGY)

- **Optical system** Infinity corrected plan objectives, (10x, 20x and 40x)
- **Head & Eyepieces** WF10x paired eyepiece.
- **Bright Field Illumination** 12V, 20W halogen light source with pre-centred light condenser bulb coupled with a collector lens system provides optimum brightness along the optical path.
- **Fluorescence Light Source** High power blue LED (470-480nm).
- **Fluorescence Filters** FITC
- **Power Supply** 110 - 240V AC. 50/60 Hz. Single phase.

Code 84201



OPTIONALS

Code	Description
------	-------------

ME15035	4x objective
ME15039	100x objective
AC15045	Trinocular head
AC15277	Digital Camera



IMMUNOFLUORESCENCE LABORATORY SOFTWARE: TOTAL INTEGRATION

- LIMS Communication
- Bidirectional communication with iPro: import sessions and request new test
- Patterns, titers and images of controls configurable by test
- Patient results management in association with images from the camera (TWAIN compatible)
- Patient historical of results and images: SQL Server Database
- Possibility to print results report with images
- Image reference Atlas

Code 84301





SEROLOGY

SEROLOGY

Code	Quantity	Method
ANTI-STREPTOLYSIN O (ASO) - SLIDE		
31448	1x3 mL	Agglutination
31019	50 tests	LATEX
31086	150 tests	
C-REACTIVE PROTEIN (CRP) - SLIDE		
31107	1x3 ml	Agglutination
31011	50 tests	LATEX
31012	150 tests	
RHEUMATOID FACTORS (RF) - SLIDE		
31108	1x3 ml	Agglutination
31013	50 tests	LATEX
31014	150 tests	
RPR-CARBON		
36001	100 tests	Agglutination
36002	500 tests	
TPHA		
36005	200 tests	Hemagglutination

SEROLOGY

Code	Quantity	Method
------	----------	--------

FEBRILE SERODIAGNOSTICS MULTISCREENING

33001	6 x 100 tests	<p>Agglutination</p> <p>SLIDE AND TUBE TESTS</p> <p>Salmonella paratyphi AH, Salmonella paratyphi BH, Salmonella typhi H, Salmonella typhi O, B. abortus (Rose Bengal), Proteus Ox19.</p> <p>Positive (Salmonella, Brucella and Proteus) and negative controls included</p>
-------	---------------	-----------------------------------------------------------------------------------------------------------------------------------------------------------------------------------------------------------------------------------------------------------------------------

FEBRILE SERODIAGNOSTICS SALMONELLA

33080	8 x 100 tests	<p>Agglutination</p> <p>SLIDE AND TUBE TEST</p> <p>Salmonella paratyphi AO, Salmonella paratyphi AH, Salmonella paratyphi BO, Salmonella paratyphi BH, Salmonella paratyphi CO, Salmonella paratyphi CH, Salmonella typhi H, Salmonella typhi O.</p>
-------	---------------	------------------------------------------------------------------------------------------------------------------------------------------------------------------------------------------------------------------------------------------------------

FEBRILE ANTIGENS

33309	5 mL	Brucella abortus
33315	5 mL	Brucella abortus (Rose Bengal)
33301	5 mL	Salmonella paratyphi AH
33302	5 mL	Salmonella paratyphi AO
33303	5 mL	Salmonella paratyphi BH
33304	5 mL	Salmonella paratyphi BO
33305	5 mL	Salmonella paratyphi CH
33306	5 mL	Salmonella paratyphi CO
33307	5 mL	Salmonella typhi H
33308	5 mL	Salmonella typhi O
33311	5 mL	Proteus Ox19

ALPHABETICAL INDEX

A

α 1-MICROGLOBULIN STANDARD	12	ANTI-SACCHAROMYCES CEREVISIAE	
α 1-ACID GLYCOPROTEIN	8	ANTIBODIES IgG/IgA (ASCA)	33
α 1-MICROGLOBULIN	8	ANTI-ScI70 ANTIBODIES	32
α -AMYLASE-DIRECT	4	ANTI-SKIN ANTIBODIES (ASA)	30
α -AMYLASE-EPS	4	ANTI-Sm ANTIBODIES	32
α -AMYLASE-PANCREATIC	4	ANTI-Sm/RNP ANTIBODIES	32
α 2-MICROGLOBULIN STANDARD	12	ANTI-SMOOTH MUSCLE ANTIBODIES (ASMA)	29
α 2-MICROGLOBULIN	8	ANTI-SSA (Ro) ANTIBODIES	32
5-AMINOLEVULINIC ACID (ALA) / PORPHOBILINOGEN (PBG)	11	ANTI-SSB (La) ANTIBODIES	32
A15	14	ANTI-STREPTOLYSIN O (ASO) - SLIDE	38
A25	15	ANTI-STREPTOLYSIN O (ASO) STANDARD	12
ACID PHOSPHATASE (ACP)	4	ANTI-STREPTOLYSIN O (ASO)	8
ACTIVATED PARTIAL THROMBOPLASTIN TIME (APTT)	10	ANTI-STRIATED MUSCLE ANTIBODIES (AStMA)	30
ADA CONTROLS	25	ANTITHROMBIN III	8
ADENOSINE DEAMINASE (ADA) STANDARD	12	ANTI-THYROGLOBULIN ANTIBODIES (anti-TG)	33
ADENOSINE DEAMINASE (ADA)	4	ANTI-THYROID ANTIBODIES (ATA)	30
ALANINE AMINOTRANSFERASE (ALT/GPT)	4	ANTI-THYROID PEROXIDASE ANTIBODIES (anti-TPO)	33
ALBUMIN (MICROALBUMINURIA) STANDARD	12	ANTI-tTRANSGLUTAMINASE IgA ANTIBODIES (Anti-tTG IgA)	33
ALBUMIN (MICROALBUMINURIA)	8	ANTI-tTRANSGLUTAMINASE IgG ANTIBODIES (Anti-tTG IgG)	33
ALBUMIN	4	ANTI- β 2-GLYCOPROTEIN 1 ANTIBODIES IgG/IgM (β 2-GP1)	32
ALKALINE PHOSPHATASE (ALP)-AMP	4	APOLIPOPROTEIN A-I (Apo A-I)	8
ALKALINE PHOSPHATASE (ALP)-DEA	4	APOLIPOPROTEIN A-I STANDARD	12
ANA-SCREENING	32	APOLIPOPROTEIN B (Apo B)	8
ANTI-ADRENAL CORTEX ANTIBODIES (AACA)	30	APOLIPOPROTEIN B STANDARD	12
ANTI-ANNEXIN V ANTIBODIES IgG/IgM (ANX)	32	ASPARTATE AMINOTRANSFERASE (AST/GOT)	4
ANTI-BPI ANTIBODIES	33	AUTOANTIBODIES DUO	30
ANTI-CARDIOLIPIN ANTIBODIES (ACA-IgG/IgM)	32	AUTOANTIBODIES MsL/MsK/MsS	
ANTI-CATHEPSIN G ANTIBODIES	33	(ANA-AMA-ASMA-APCA-LKM)	29
ANTI-CENTROMERE B ANTIBODIES (CENP-B)	32	AUTOANTIBODIES RL/RK/RS (ANA-AMA-ASMA-APCA-LKM)	29
ANTI-CITRULLINATED PROTEIN ANTIBODIES (ACPA)	32	B	
ANTI-DEAMIDATED GLIADIN (DGP-IgA)	33	β -GLUTAMYLTRANSFERASE (β -GT)	6
ANTI-DEAMIDATED GLIADIN (DGP-IgG)	33	BA 400	16
ANTI-dsDNA ANTIBODIES	32	BILIRUBIN (DIRECT)	4
ANTI-ELASTASE ANTIBODIES	33	BILIRUBIN (TOTAL AND DIRECT)	5
ANTI-ENDOMYSIUM ANTIBODIES (AEA)	29	BILIRUBIN (TOTAL)	4
ANTI-GLIADIN ANTIBODIES (AGA-IgG/IgA)	33	BILIRUBIN STANDARD	12
ANTI-GLOMERULAR BASEMENT MEMBRANE ANTIBODIES (GBM)	33	BIOCHEMISTRY CALIBRATOR (HUMAN)	12
ANTI-HISTONES ANTIBODIES (HIST)	32	BIOCHEMISTRY CALIBRATOR	12
ANTI-INSULIN ANTIBODIES	33	BIOCHEMISTRY CONTROL SERUM (HUMAN)	25
ANTI-ISLET CELL ANTIBODIES (AICA)	30	BIOCHEMISTRY CONTROL SERUM	25
ANTI-Jo1 ANTIBODIES	32	BIOCHEMISTRY CONTROL URINE	25
ANTI-KERATIN ANTIBODIES (AKA)	30	BTS 350	13
ANTI-LACTOFERRIN ANTIBODIES	33	C	
ANTI-LYSOZYME ANTIBODIES	33	CALCIUM CRESOLPHTHALEIN	5
ANTI-M2 ANTIBODIES (M2)	33	CALCIUM-ARSENAZO	5
ANTI-MITOCHONDRIAL ANTIBODIES (AMA)	29	CALCIUM-MTB	5
ANTI-MPO ANTIBODIES (P-ANCA)	33	CARBON DIOXIDE (CO2)	5
ANTI-nDNA ANTIBODIES (nDNA)	29	CARBON DIOXIDE CONTROL	25
ANTI-NEUTROPHIL CYTOPLASMIC ANTIBODIES (ANCA)	29	CARBON DIOXIDE STANDARD	12
ANTI-NUCLEAR ANTIBODIES HEp-2 (ANA-HEp-2)	29	CITRATE	6
ANTI-NUCLEOSOME ANTIBODIES (NCL)	32	CK-MB CONTROL SERUM	25
ANTI-PHOSPHOLIPID ANTIBODIES IgG/IgM (APLA)	32	COAGULATION CALIBRATOR	12
ANTI-PR3 ANTIBODIES (C-ANCA)	32	COAGULATION CONTROL	25
ANTI-RIBOSOMAL P ANTIBODIES (Rib P)	32	COMPLEMENT COMPONENT C3	8
		COMPLEMENT COMPONENT C4	8
		CONTROL URINE	25
		C-REACTIVE PROTEIN (CRP) - SLIDE	38

ALPHABETICAL INDEX

C-REACTIVE PROTEIN (CRP)	8	IRON-FERROZINE	6
C-REACTIVE PROTEIN hs (CRP-hs)	8	K	
CREATINE KINASE (CK)	6	17-KETOSTEROIDS	11
CREATINE KINASE-MB (CK-MB)	6	L	
CREATININE	6	LACTATE DEHYDROGENASE (LDH)	6
CRP/CRP-hs STANDARD	12	LACTATE DEHYDROGENASE (LDH)-IFCC	7
CHOLESTEROL HDL DIRECT	5	LIPASE	7
CHOLESTEROL HDL PRECIPITATING REAGENT	5	LIPID CONTROL SERUM	25
CHOLESTEROL HDL	5	M	
CHOLESTEROL HDL/LDL CALIBRATOR	12	MAGNESIUM	7
CHOLESTEROL LDL DIRECT	5	METANEPHRINES	11
CHOLESTEROL LDL PRECIPITATING REAGENT	5	Miscellaneous	31
CHOLESTEROL	5	P	
CHOLINESTERASE (CHE)	5	PHOSPHORUS	7
E		PREALBUMIN	9
ENA 4-PROFILE	32	PREVECAL ANA	26
ENA 6-PROFILE	32	PREVECAL ANCA	26
ENA 6-SCREENING	32	PREVECAL BIOCHEMISTRY (BOVINE)	26
F		PREVECAL BIOCHEMISTRY HUMAN	26
FEBRILE ANTIGENS	39	PREVECAL CELIAC	26
FEBRILE SERODIAGNOSTICS MULTISCREENING	39	PREVECAL nDNA	26
FEBRILE SERODIAGNOSTICS SALMONELLA	39	PREVECAL PROTEINS	26
FERRITIN STANDARD	12	PREVECAL RHEUMA	26
FERRITIN	9	PROTEIN (TOTAL)	7
FERTILITY BIOCHEMISTRY CONTROL	25	PROTEIN (URINE) STANDARD	12
FIBRINOGEN CLAUSS	10	PROTEIN (URINE+CSF)	7
FIBRINOGEN CONTROL	25	PROTEIN CALIBRATORS	12
FIBRINOGEN STANDARD	12	PROTEIN CONTROL SERUM	25
FIBRINOGEN	9	PROTHROMBIN TIME (PT)	10
FITC/EVANS (R)	31	R	
FRUCTOSAMINE	6	RHEUMATOID CONTROL SERUM	25
FRUCTOSE	6	RHEUMATOID FACTORS (RF) - SLIDE	38
G		RHEUMATOID FACTORS (RF) STANDARD	12
GLOMERULAR BASEMENT		RHEUMATOID FACTORS (RF)	9
MEMBRANE ANTIBODIES (GBMA)	29	RPR-CARBON	38
GLUCOSE	6	T	
GLUCOSE-HEXOKINASE	6	THROMBIN TIME (TT)	10
H		TISSUE SLIDES FOR RESEARCH USE ONLY (RUO)	30
HbA1C STANDARD	12	TOTAL BILE ACID	7
HEMOGLOBIN A1C CONTROL	25	TPHA	38
HEMOGLOBIN A1C	11	TRANSFERRIN	9
HEMOGLOBIN A2 CONTROL	25	TRIGLYCERIDES	7
HEMOGLOBIN A2	11	U	
5-HYDROXYINDOLEACETIC ACID (5-HIAA)	11	UREA/BUN-COLOR	7
17-HYDROXYCORTICOSTEROIDS (17-OH)	11	UREA/BUN-UV	7
I		URIC ACID	7
IgA FITC/EVANS	31	V	
IgG FITC/EVANS (M)	31	VANILMANDELIC ACID	11
IgG FITC/EVANS	31	Z	
iMLD	35	ZINC	7
iMLS	36		
IMMUNOGLOBULIN A (IgA)	9		
IMMUNOGLOBULIN G (IgG)	9		
IMMUNOGLOBULIN M (IgM)	9		
iPRO	34		
IRON BINDING CAPACITY	6		
IRON-CHROMAZUROL	6		



Ginper Group



BioSystems

Manufactured by: BioSystems S.A.

Costa Brava 30, 08030 Barcelona (Spain) Tel. +34 93 311 00 00
biosystems@biosystems.es - www.biosystems.es



• Certified Management System
• EN ISO 9001
• EN ISO 13485

