



KONICA MINOLTA

bizhub c200

Colour Printer • Colour Copier • Scanner • Fax • E-mail



2012 MFP
Line of the Year

We've made colour more common.



At Black & White **20** pages/min
At Full Colour **20** pages/min

Model shown with options.

Giving Shape to Ideas



Make colour fit your company and your costs.

To ensure that the use of colour documents and presentations isn't only for large companies, Konica Minolta created the compact, easy-to-use and surprisingly affordable bizhub C200. As everyone knows, colour makes your presentations and proposals more convincing. And, this compact machine boasts excellent colour image quality. It also reaches copy and print speeds of 20 pages per minute in both black & white and colour, to make sure your documents are ready when you need them. Whether you're copying, printing, scanning or faxing, the C200 promises to be just the right fit for you, your office and your company's success.



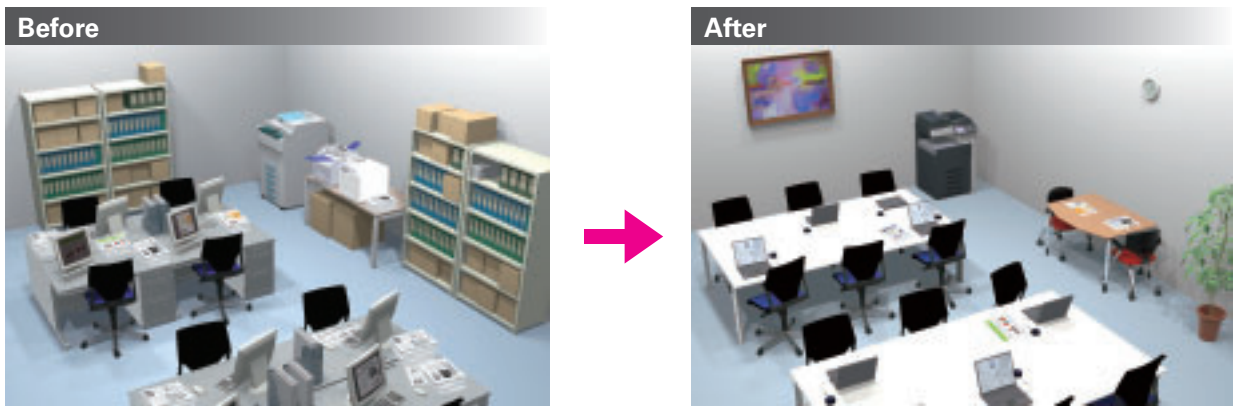
bizhub 
C200

Model shown with options.



Make your office more efficient.

The multifunctional bizhub C200 helps small offices like yours become more efficient and more friendly places to work. This all-in-one machine lets you streamline your office by allowing you to relocate print, copy, scan and fax functions to one convenient site. By utilising the C200's scanner you can also free up valuable floor space by converting hard documents into digital files. Financially, the C200 allows you to lower your total cost of ownership (TCO) by getting rid of your black & white copier, colour printer, scanner and fax and replacing them with one efficient machine capable of taking on the work of all those devices. The C200's Internet and IP Address Fax features will also help you reduce communication costs. And, the bizhub's exceptional energy efficiency will cut utility costs. Finally, the C200's ultra-quiet operation also helps create a less noisy, and more friendly work environment.



All-in-One Design

Compact Body

Documents into Digital Files

Quiet Operation

Quietest Colour bizhub 30.4dB*

* When on standby. (Measured as sound pressure level in accordance with ISO7779.)

Energy Efficiency

Typical Electricity Consumption (TEC) Value

Device	TEC Value
Energy Star Standard	9,000
bizhub C200	3,600

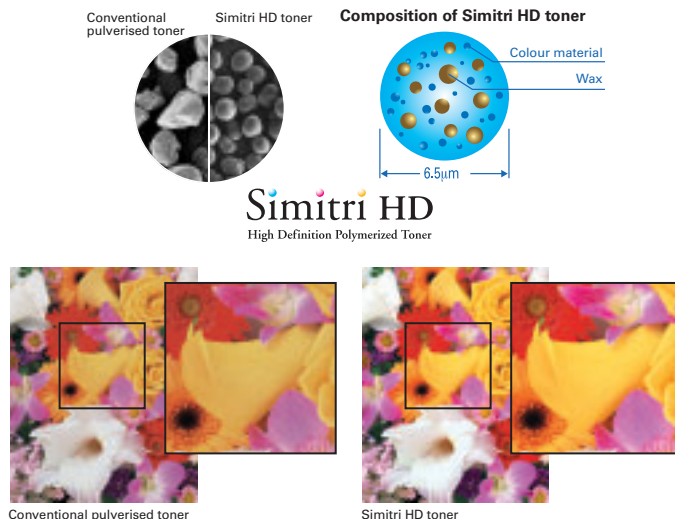
Make the most of your valuable time.

Whether you're working in black & white or in colour, printing, copying, scanning or faxing, the bizhub C200 helps you get your work done efficiently and creatively every time.

The C200 offers high-speed output, vivid colour and a host of other features and functions built to help you and your office improve its workflow productivity.

High Image Quality

Due to a collection of technologies like our polymerised Simitri HD Toner, the C200 promises exceptional image quality. Simitri HD Toner is resistant to wear and tear thanks to its high fade resistance, matching that of professional printing ink. This makes documents suitable for long-term storage. Thanks to the toner's oil-less fixing, it is also easy to write on printed documents with a water-based pen or securely stick adhesive notes to them.



Images are for illustrative purposes only.

Tandem Engine

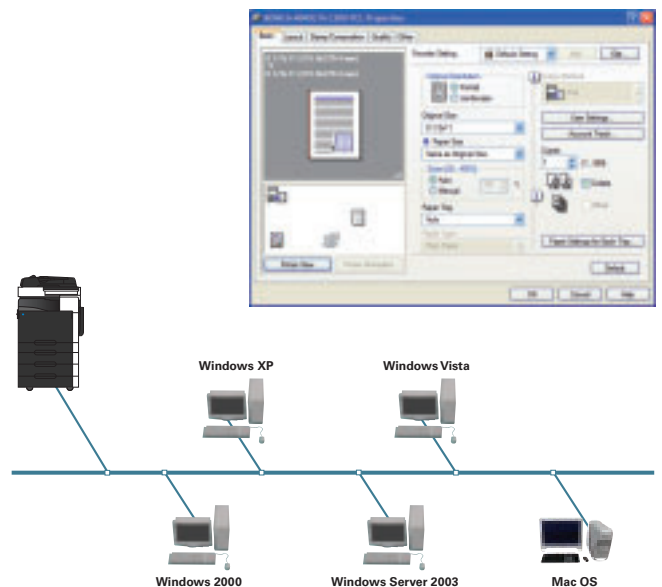
The C200 is equipped with the same type of tandem engine usually found in higher-end MFP models. This engine enables the C200 to achieve both high image quality and output speeds of 20 pages per minute in either black & white or colour.



High-Performance Emperon Print System



Standard on the C200, the Emperon Print System provides multi-OS support that can be utilised in a mixed network (Macintosh and Windows-based PCs) environment. The C200's Emperon also features standard PCL and PostScript drivers.



Thick Paper Compatibility and Large Paper Capacity

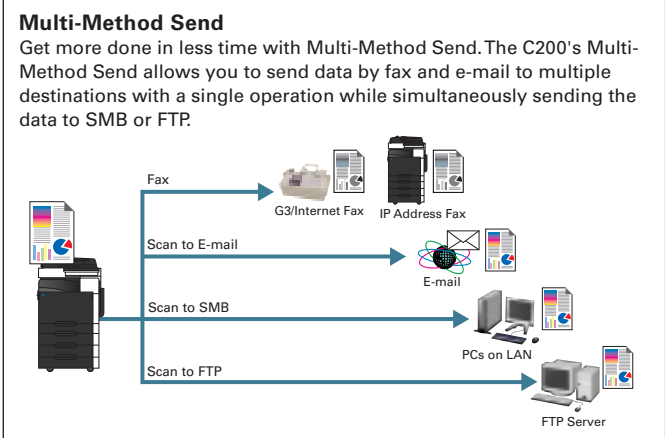
The C200 accommodates thick paper up to 256g/m² in all of its trays. In terms of capacity, it holds up to 3,350 sheets of paper, including 100 sheets in its multiple bypass tray. And, it accommodates a wide range of paper sizes including paper from A3 wide to A6, as well as envelopes and labels.





Scanning

With the C200's scanner you have the ability to scan documents, convert them to digital data and then send them to a variety of destinations; these include Scan to E-mail, Scan to FTP, Scan to SMB and TWAIN scan.



Security and Management

The bizhub C200's security and management features were developed to help you maintain your company's bottom line. bizhub's department management function offers the security of departmental authentication, and allows the administrator to restrict functions such as colour output, which keeps overall bizhub utilisation costs under control.

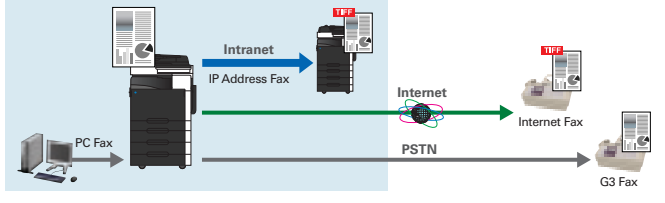
Universal Design

Designed to accommodate anyone regardless of age, gender, body size or disability, the C200 features a vertically tilting control panel with improved tilt mechanism, easy-grip paper trays and front access to toner and paper. The "start" button also has an easy-to-see blue LED light.

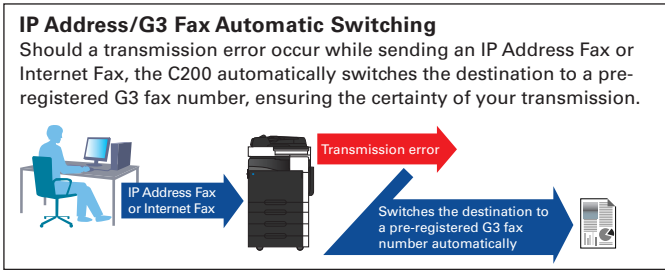


Fax

The C200 boasts an optional fax with features that utilise network infrastructure—Internet and intranets—to move information faster and to provide cost reductions. Besides our G3 fax, this machine offers Internet Fax, IP Address Fax and PC Fax (for Windows only) functions.



IP Address Fax
The C200's IP Address Fax allows you to cost-effectively send a black & white fax to any bizhub on the network that supports IP Address Fax simply by selecting an IP address. Because this method uses existing network systems, no additional costs are associated with it.



No-grip tilting control panel



Large, easy-grip paper trays



Convenient front access



Optional Assist Handle for those with disabilities

bizhub C200 Functions

Copy Functions

•Text, Photo, Text/Photo, Map, Dot Matrix modes •Single colour copy (21 colours) •Auto density adjustment (for background only) •Auto paper selection •Auto zoom selection •Mixed originals •Image rotation •Program registration (up to 10) •Neg./pos. reverse •Horizontal/vertical individual zoom settings •2-in-1/4-in-1 copy •Interrupt mode •Slightly reduced copy •Program job •Crisscross offset

Print Functions

•Document, Photo, DTP Web, CAD modes •Poster mode •N-in-1, N x N (2/4/6/9/16 in 1, 2x2, 3x3, 4x4) •Multiple protocol compatibility: RAW, LPD/LPR (AppleTalk, IPP, NetWare, SMB) •Stamp (Watermark) •Overlay •180° rotation •Blank page control (PCL only) •Margin setting (position/size) •Print status notification (Software required) •Batch print (Optional) •TIFF Direct Print (Software required) •PDF Direct Print (Software required)

Copy/Print Functions

•Multi-job •Duplex copy/print (Optional) •Enlarge/reduce/zoom •Glossy mode copy/print •2-colour copy/print (PCL only) •Sort •Group •Shift offset (Optional) •Auto tray switch

Scanning Functions

•Auto Colour Selection/mixed original scanning •Multi-Method Send •Scan to E-mail •E-mail subject/E-mail body text (administrator mode) •Scan to SMB •Scan to FTP •E-mail notification of Scan to SMB/FTP URL •TWIN Scan (Raw mode is optional) •File conversion (TIFF/PDF/JPEG) •Single or multiple file saving

Fax Functions (Optional)

•G3 Fax •Text, Photo, Text/Photo, Dot Matrix, Map modes •600 dpi fax (Not available with G3 Fax) •Fax Multi Line •Rotation transmission/reception •2-in-1 transmission •2-sided transmission •Memory transmission •Quick scan transmission •Priority transmission •Timer transmission •Remote copy •Remote output •Memory RX (print as needed) •Memory reception (save when printing fails) •Fax forwarding •Bulletin setting •Polling transmission/reception •Broadcast transmission •F-code •ECM OFF (Service rep setting) •V.34 OFF (Service rep setting) •Overseas transmission •Transmission report •Stamp/composition (Watermark) •Scanned stamp •Internet Fax •Internet Fax result notification •PC Fax •N-in-1, N x N (PCL only) •Cover sheet (PC Fax) •IP Address Fax (B&W only) •IP address/G3 fax automatic switching •Relay distribution (including IP relay)

Scanning/Fax Functions (Optional)

•One-touch registration (up to 300) •Program transmission (up to 30) •LDAP search

Security & Management Functions

•Department management (up to 50 depts) (Function restrictions (copy/print/data transmission)) •Secure Print (Win/Mac OSX only) (Optional) •Secure Print result notification (Optional) •Scan to E-mail SMTP authentication, POP before SMTP •Confidential fax transmission/reception (Optional) •Password fax transmission/reception (Optional) •Automatic fax destination verification and transmission (CSI: Called Subscriber ID) (Optional)

Specifications

bizhub C200

Type	Desktop Full-Colour Copier/Printer/Scanner	
Colour Support	Full Colour	
Copy Resolution	Scan	Main: 600dpi x Sub: 600dpi
	Print	Main: 600dpi x Sub: 600dpi
Gradation	256	
Memory Capacity (Std./Max.)	576MB/1,088MB	
HDD	Not Available	
Original Type	Sheets, Books, Objects	
Max. Original Size	A3 (11" x 17")	
Output Size	A3-A5, A3 Wide (12" x 18"), A6S*	
Image Loss	Max. 4.2mm for top edge, Max. 3mm for bottom/right/left edges	
Warm-Up Time (23°C, std. voltage) (time from when sub-power is turned on)	Colour	40 sec. or less
	B&W	37 sec. or less
First Copy Time (23°C, std. voltage)	Colour	13.5 sec. or less
	B&W	10 sec. or less
Copy Speed	Colour	20 pages/min (A4 Crosswise), 9.8 pages/min (A3)
	B&W	20 pages/min (A4 Crosswise), 9.8 pages/min (A3)
Copy Magnification	Fixed Same Magnification	1:1±0.5% or less
	Scaling Up	1:1.154/1.224/1.414/2.000
	Scaling Down	1:0.866/0.816/0.707/0.500
	Preset	3 types
	Zoom	25-400% (in 0.1% increments)
	Lengthwise Crosswise Individual Settings	25-400% (in 0.1% increments)
Paper Capacity (80g/m ² paper)	Standard	250 sheets (1st Tray)
	Optional	500 sheets (PC-105), 500 sheets (PC-104), 500x2 sheets (PC-204), 2,500 sheets (PC-405), 100 sheets (Multi Bypass Tray MB-502)
Paper Weight	Trays 1-4	60-256g/m ²
	Multi Bypass Tray	60-256g/m ²
Multiple Copy	1-999 sheets	
Power Requirements	AC220-240V 6A (50/60Hz)	
Max. Power Consumption	1.25kW or less	
Dimensions [W] x [D] x [H]	620mm x 688mm x 648mm (24-1/2" x 27" x 25-1/2")	
Weight	Approx. 68kg (150lb)	
Space Requirements [W] x [D] (Standard system)	620mm x 688mm (24-1/2" x 27")	

* Short edge feed

Controller

Type	Internal Type	
CPU	Power PC 440EP 667Hz	
Memory	Shared with copier	
Print Speed	Same as Copy Speed (when using the same original)	
HDD	Not available	
Print Resolution	Main: 600dpi x Sub: 600dpi	
PDL	PCL5e/C Emulation, PCL XL ver.3.0 Emulation, PostScript 3 Emulation (3015)	
Protocol	TCP/IP, LPD, IPX/SPX (NDS supported), SMB (NetBEUI), IPP1.0, EtherTalk	
Support OS	Server	Windows 2000/Server 2003/Server 2003 x64 Edition
	Client	Windows 2000/XP/Vista/XP x64 Edition/Vista x64 Edition/MacOS 9.2 or later/MacOS X ver.10.2-10.4 (10.5)/Mac Intel OS X 10.4 (10.5)
Font	PCL	80 European fonts
	PS	137 European Type1 fonts
Interface	Ethernet (10BASE-T/100BASE-TX), USB2.0 Compatible	

Scanning Function

Type	Full-Colour Scanner	
Interface	Ethernet (10BASE-T/100BASE-TX)	
Driver	TWIN Driver	
Protocol	TCP/IP (SMTP, FTP, SMB)	
Support OS	Windows 2000/XP/MacOS X ver.10.2 or later	
Scanning Speed (A4 Crosswise) Colour / B&W	20/40 pages/min (300dpi)	
Scanning Size	Max. A3	
Output Format	TIFF (#2 standard, No colour TIFF), PDF (V1.3 standard), JPEG	
Scanning Resolution	Push	200/300/400/600dpi
	Pull (only TWIN scan)	100/200/300/400/600dpi
Main Functions	Scan to E-Mail, Scan to FTP, Scan to SMB (Network TWIN via Ethernet TCP/IP)	
Other Functions	Multi-Method Send, Authentication for e-mail sending	

IP Address Fax Function

(Optional Fax Kit FK-507 is required.)

Protocol/Transmission	SMTP, TCP/IP
Encoding System	MH, MR, MMR, JPEG
Sending Paper Size	Max. A3
Recording Paper Size	Flatbed Scan: Max. A3 Automatic Document Feeder Scan: B&W: Max. 297 x 1,000mm
Scanning Speed (A4 Crosswise)	B&W 200dpi: 40ppm
Interface	Ethernet (10BASE-T/100BASE-TX)
Resolution	200/300/400/600dpi

Product appearance, configuration and/or specifications are subject to change without notice.

KONICA MINOLTA, the KONICA MINOLTA logo and symbol mark, and "Giving Shape to Ideas" are registered trademarks or trademarks of KONICA MINOLTA HOLDINGS, INC. bizhub, bizhub PRO, bizhub PRESS, Magicolor, PagePro, PageScope, Simitri, Simitri HD, Simitri HD+, Simitri with Biomass, Emperon, S.E.A.D., S.E.A.D.II, Printgroove and Konica Minolta Optimised Print Services and their respective logos are registered trademarks or trademarks of KONICA MINOLTA BUSINESS TECHNOLOGIES, INC.

All other brands and product names are registered trademarks or trademarks of their respective companies or organisations.



Ecology & Environment

KONICA MINOLTA products are designed with the environment in mind.

- Energy Star
- Blue Angel Mark (BAM)
- RoHS Compliance
- WEEE Compliance
- Eco-friendly Toners
- Production at ISO Certified Factories



From consulting, system design, to operations, Konica Minolta offers total support to optimise your office output environment.

<http://www.biz.konicaminolta.com/services/ops>

Requirements for safe use

- Please read and follow the instruction manual to ensure safe operation.
- Only operate using appropriate power supply and voltage.
- Connecting the earth wire to an inappropriate place may cause explosion or electric shock. Please connect accordingly (Taiwan and the Philippines only).

KONICA MINOLTA BUSINESS TECHNOLOGIES, INC.

1-6-1 Marunouchi Chiyoda-ku, Tokyo, Japan
<http://www.biz.konicaminolta.com>

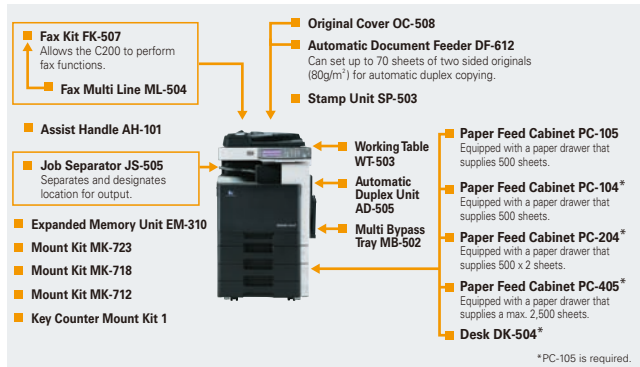
9251-3171-71 01203(E)-H1 Printed in Japan

Fax Function

(Optional Fax Kit FK-507 is required.)

Communication	ECM/G3
Compatible Lines	PSTN, PBX
Line Density	G3: 8 dot/mm x 3.85 line/mm to 400x400dpi
Modem Speed	2.4kbps-33.6kbps
Compression	MH/MR/MMR/JBIG
Sending Paper Size	Flatbed Scan: Max. A3 (Long Length Max. 1,000mm) Automatic Document Feeder Scan: Max. 297x1,000mm (Simplex), Max. 297x432mm (Duplex) Max. A3 (Long Length Record Max. 1,000mm - following the page division -)
Recording Paper Size	
Transmission Speed	Less than 3 sec. (A4, V.34, 33.6kbps, JBIG)
Scanning Speed (A4 Crosswise)	B&W Fine Mode: 40ppm
Memory	Shared with copier
Number of Abbr. Dials	300
Number of Program Dials	30
Number of Group Dials	30
Sequential Multiple Station Transmission	Max. 210

System Options



Required Options

	Fax Kit FK-507	Fax Multi Line ML-504	Expanded Memory Unit EM-310 <512MB>	Automatic Duplex Unit AD-505	Job Separator JS-505
G3 Fax	✓				
Fax Multi Line	✓	✓			
PC Fax	✓				
Internet Fax	✓				
IP Address Fax (B&W only)	✓				
IP relay distribution	✓				
IP address/G3 fax automatic switching	✓				
Duplex copy/print			✓	✓	
Shift Offset (Copy/Print)			✓		✓
Secure Print			✓		
Batch print (PC printing)			✓		
Continuous reception (PC printing)			✓		
TWIN Scan Raw mode			✓		