

The Multifunction that Grows with Your Business

Combining advanced digital technology with powerful features, the AR-M236 Digital Multifunction System offers high-performance copying and printing functions for businesses of all sizes, helping you achieve professional results, faster and easier than ever before. A variety of optional hardware can further expand the performance of the AR-M236, allowing automatic job finishing, network printing, and scanning functions that dramatically enhance document workflow in the office.

The user-friendly design and Sharp's proprietary multi-layered security make it easy and secure for anyone to harness the power of this versatile multifunction machine.

Scanner

Printer

Copier



What is the Common Criteria?

The Common Criteria is an international accreditation standard designed to facilitate the evaluation of the security levels of information systems, hardware and software. Security evaluation standards were originally implemented in the US and European countries for the protection of military information, then as security for commercial products and systems grew important, the Common Criteria was consequently developed in October 1998.

Sharp and Data Security

Sharp is the world's first company in the copier/printer industry to have its Data Security Kits certified to the Common Criteria. The AR-FR12 M* data security kit for the AR-M236 is certified for Common Criteria EAL3+ (evaluation assurance level 3+).

*If you wish to simultaneously upgrade both the Data Security Kit's ROM and the main unit's ROM, please use the AR-FR12 U (commercial version). For details, consult your Sharp dealer.

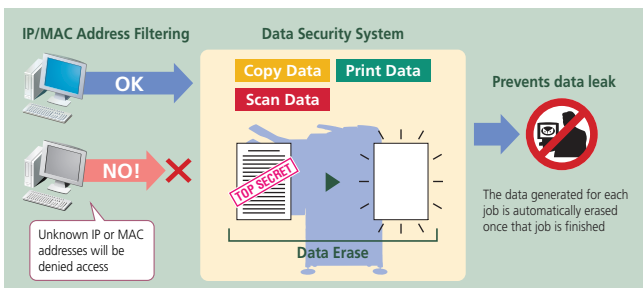


The validation obtained by this product concerning information security is the result of the evaluation based on the standards and methods prescribed by the Target of Evaluation. It certifies that the product conforms to security assurance requirements.

Multi-Layered Security Approach

• IP/MAC Address Filtering

The optional AR-NC5J Print Server Card and the AR-P17 Printer Expansion Kit provide the AR-M236 with highly secure printing and scanning capabilities by restricting access to the AR-M236 from your office network. Only PCs that have either or both their IP address or MAC (media access control) address registered are allowed to use the AR-M236. Attempted access from an unknown IP or MAC address will be denied, preventing unauthorised use.



• Data Security

Digital copier/printers or multifunction products can retain hundreds of pages of confidential information from previous jobs on their internal memory. To prevent these sensitive records from being recovered by unauthorised persons, the AR-M236 can be equipped with the optional AR-FR12 M*/FR12 U Data Security Kit, which completely erases the data generated for each job.

*Common Criteria EAL3+ validated.

• User Authentication for Network Scanning

To prevent unauthorised use of network scanning, the AR-M236 supports user authentication, which requires users to log in to the machine before performing any network scanning operations. Note: Available with optional AR-P17 and AR-NS2.

• Confidential Print

To keep others from seeing confidential documents as they are being printed out, the Confidential Print function requires the user to enter in a PIN (personal identification number) at the machine before printing can begin.

• Auditing Mode

A five-digit password ensures that only authorised users can access the operation panel and print from a PC to the AR-M236.

AR-M236 Digital Multifunction System

SPECIFICATIONS (tentative)

General	
Type	Desktop
Engine speed (copy/print)	600 dpi: Max. 23 cpm/ppm
(A4 size, 8 1/2" x 11")	1,200 dpi: Max. 13.5 cpm/ppm
Paper size	Max. A3 (11" x 17"), min. A5 (5 1/2" x 8 1/2")
Paper capacity	1,100 sheets (500 x 2 + 100), max. 2,100 sheets with option
Memory	32MB, upgradeable to 1,056MB
First copy time*1	4.8 seconds
Warm-up time*2	23 seconds
Power requirements	Rated local AC voltage ±10%, 50/60 Hz
Power consumption	Max. 1.4 kW, 10W or less in Sleep mode
Dimensions (W x D x H)	623 x 609.5 x 640.5 mm (24 17/32" x 24" x 25 7/32")
Weight	Approx. 46 kg (101.3 lbs.)

Copier	
Original paper size	Max. A3 (11" x 17")
Continuous copy	Max. 999 copies
Resolution	Scan: 400 dpi Print: 600 dpi, 1,200 dpi (Super Photo mode)
Gradation	Scan: 256 levels Print: 2 levels
Zoom range	25 to 400% (1,200 dpi: 50 to 200%) in 1% increments with 10 preset ratios (5R + 5E) in metric system, 8 preset ratios (4R + 4E) in inch system

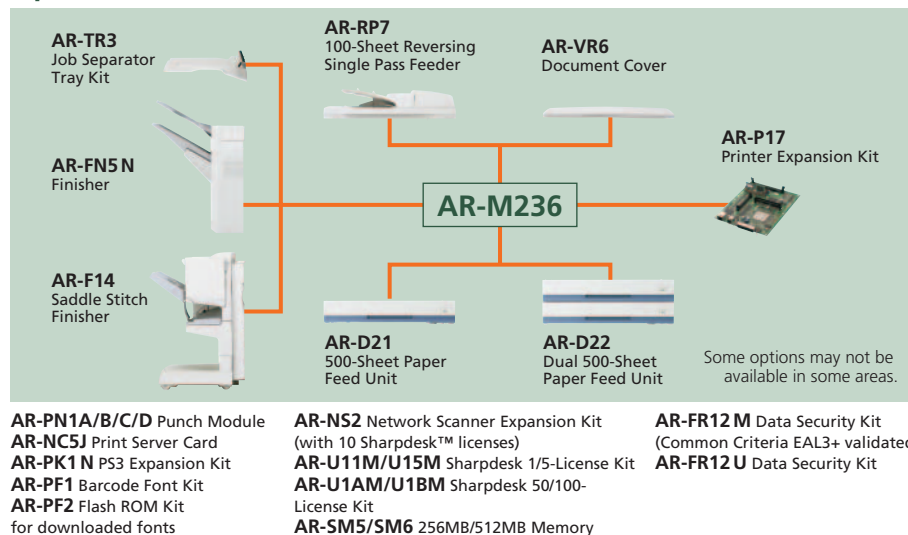
- Features
- Scan once/print many • Electronic sorting
 - Offset function • Duplex copy • Dual page copy
 - B&W reverse • XY zoom • Multi shot (2-in-1/4-in-1)
 - Rotation copy • Edge/centre erase • Margin shift
 - Auto paper/magnification selection • Job programme
 - Job build • Pre-heat/auto power shut-off modes
 - Copy auditing (100 accounts) • Pamphlet copy
 - Cover insertion

Scanner*3	
Resolution*4	Optical: 400 dpi (setting range: 200, 300, 600) Output: 200, 300, 600 dpi
Compatibility	TWAIN compliant (push out method)
File format	TIFF, PDF
Features	• Sharpdesk™ • Scan to e-mail/FTP server/desktop PC (with Sharpdesk) • LDAP for easy e-mail address browsing and ad hoc e-mail/file name entry from control panel

*1: When feeding A4 (8 1/2" x 11") sheets from 1st paper tray, A4 (8 1/2" x 11") original scanned on document glass in Auto Exposure mode. *2: At rated voltage, 25°C (77°F), 65% RH. *3: Optional AR-NS2 Network Scanner Expansion Kit, AR-P17 Printer Expansion Kit and memory required. *4: Resolutions higher than 400 dpi are interpolated. *5: AR-P17 required for some features. *6: AR-PK1 N PS3 Expansion Kit required. *7: Available only in PS3. *8: Certain types of PDF and TIFF files may not print out this way. *9: AR-PF1 Barcode Font Kit required. *10: AR-P17 provides TCP/IP network connectivity in a Windows environment; adding the AR-NC5J Print Server Card gives network connectivity with other operating systems and protocols.

• Design and specifications are subject to change without prior notice.
• Windows and Windows NT are either registered trademarks or trademarks of Microsoft Corporation in the United States and/or other countries. All other brand names and product names may be trademarks or registered trademarks of their respective owners.

Options



SHARP
SHARP CORPORATION OSAKA, JAPAN

Distributed by:

SHARP

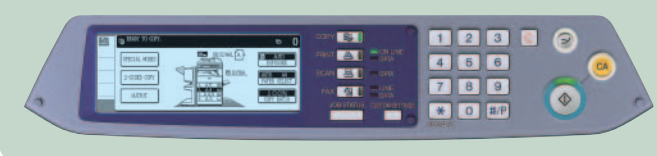
AR-M236

Digital Multifunction System



User-Friendly Design

The AR-M236's logically designed control panel has a wide, clear touch-screen LCD panel with easy-to-follow guidance that takes users step-by-step through the necessary procedures. A universal design concept makes the AR-M236 user-friendly for everyone from office equipment novices to the physically challenged, with features including easy-to-press keys and notification sounds.



The Essential Tool for Your Networked Office



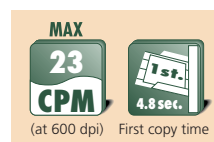
..... be sharp



COPYING

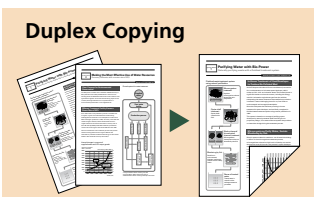
Speedy Copying and Quick First Copy Time

The AR-M236 has a quick first copy time of **4.8 seconds** to save valuable time when performing multiple short-run jobs. And with a continuous copy rate of up to **23 cpm*** (A4 size, [8 1/2" x 11"]), you can do more copy jobs in less time. *13.5 cpm at 1,200 dpi.



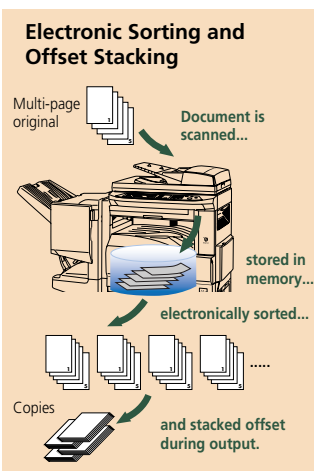
Built-in Stackless Duplex Module

The AR-M236 can automatically produce **duplex copies** from one- or two-sided originals. This reduces paper costs and helps save filing space. Duplex copying is even more productive when used together with the **optional RSPF** (reversing single pass feeder), which efficiently feeds in up to **100 pages** of either one- or two-sided originals. Plus, the duplex module's short paper path keeps paper jams to a minimum.



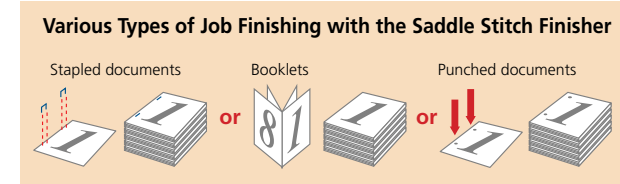
Electronic Sorting and Offset Stacking

When working with the optional 100-sheet RSPF, the Electronic Sorting function does one scan of multiple-page documents and stores them in memory for making up to **999 copies** of each page. The AR-M236 **automatically collates** multiple sets of copies in page order without the aid of a sorter and can also stack each set slightly shifted apart from the previous (**offset stacking**) for easy retrieval. All this adds up to speedy copying that boosts productivity even for large-volume documents.



Automated Job Finishing

The AR-M236 makes it easy to create professional-looking booklets automatically. Working together with the efficient Electronic Sorting function and highly productive stackless duplex module, the optional **Saddle Stitch Finisher** folds and staples sets of documents to make completed booklets. A **Punch Module** allows you to punch holes in documents for easy filing. And a **Finisher** is also available for jobs that require only simple sorting and stapling.



Job Build for Large-Volume Scanning

With optional extra memory installed, the AR-M236 easily handles copy jobs exceeding the RSPF capacity of 100 pages*. The AR-M236 automatically stores large-volume documents of up to 2,970 pages** in memory so that users can print all documents at once at a later time. *A4 (8 1/2" x 11") size **Standard A4 pages. The actual storage limit depends on the amount of memory installed.

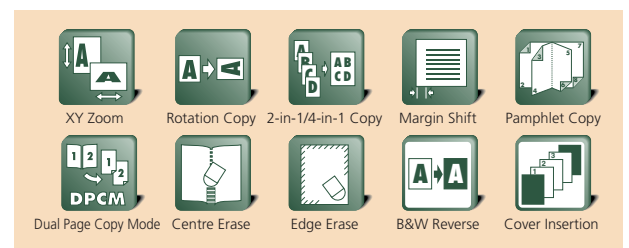
Large Paper Capacity

The AR-M236 comes standard with two 500-sheet drawers and a 100-sheet multi-bypass feeder for a total paper capacity of 1,100 sheets. For large-volume jobs and a wider selection of available paper sizes, the AR-M236 can accommodate two types of extra paper drawers for a total paper capacity of up to 2,100 sheets. When a tray runs out of paper, the **Auto Tray Switching** function automatically switches to another paper tray filled with the same size paper. This allows you to do extra-large volume jobs without worrying about running out of paper.



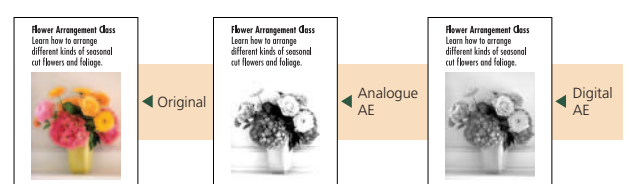
Versatile Editing Functions

Along with conventional editing functions such as B&W Reverse and XY Zoom, the AR-M236 gives you advanced editing functions made possible by digital technology.



Superb Image Quality

The Digital Automatic Exposure Control function lets you copy documents at the optimum exposure level. In **Super Photo** mode, the **1,200-dpi** laser engine reproduces the finest details of the original to give you impressive, professional-looking copies. The **Text/Photo** mode automatically adjusts the contrast to the optimum level for an original that includes text and photos.



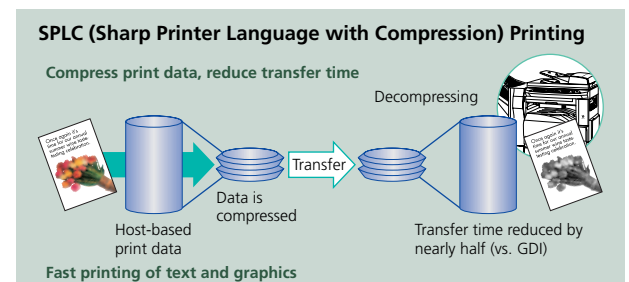
OTHER KEY FEATURES

- Wide zoom range from 25 to 400% with preset copy ratios
- Automatic paper/magnification selection
- Can handle heavy paper stock up to 200 g/m²
- Copy auditing (100 accounts)
- Pre-Heat and Auto Power Shut-Off modes

NETWORK PRINTING (option)

Speedy Printing with Sharp Technology

The AR-M236 is a high-performance printer incorporating Sharp Printer Language with Compression (SPLC) technology. SPLC effectively reduces the data size of print jobs, speeding up the data transfer time and printing process while improving overall throughput. Also, the Rip Once/Print Many function saves print data in the AR-M236's internal memory and transfers it to output at an amazing rate of **23 ppm** in 600-dpi resolution. Both **IEEE 1284 parallel** and **USB 2.0** (full speed mode) ports are provided as standard.



PCL6 and PostScript 3 Emulation

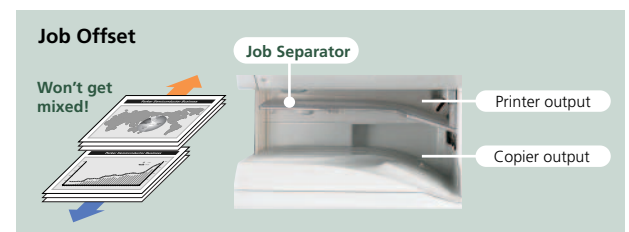
When equipped with the optional AR-P17 Printer Expansion Kit, the AR-M236 supports PCL5e and PCL6 printer languages. For compatibility with more fonts and better graphics handling, PostScript 3 is available with the AR-PK1 N PS3 Expansion Kit. Note: The optional AR-NC5J is also required for PostScript printing in the Macintosh OS.

Razor-Sharp 1,200-dpi Printing

The AR-M236's 600-dpi print engine provides enhanced 1,200-dpi print quality. This can be upgraded to **true 1,200-dpi** printing for ultra-clear image quality with the optional AR-P17.

Job Offset and Job Separator

The AR-M236 ensures your documents will stay neatly organised even when others are using the machine at the same time. To make it easier to locate and retrieve your documents from the tray, the AR-M236's Job Offset function stacks each print job slightly shifted apart from one another. In addition, a convenient Job Separator* outputs copied documents onto a separate tray, preventing them from getting mixed in with printouts. *Requires optional AR-TR3.



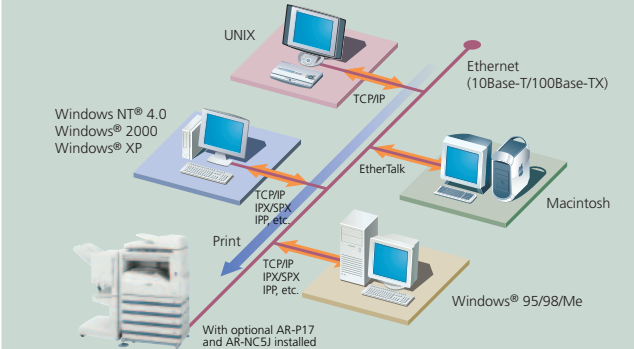
Document Finishing

Choose the optional Finisher or Saddle Stitch Finisher to automate time-consuming tasks such as sorting and stapling. The Saddle Stitch Finisher automatically arranges your document in the proper page layout and makes booklets. A Punch Module is also available to make hole-punched documents.

Network Printing

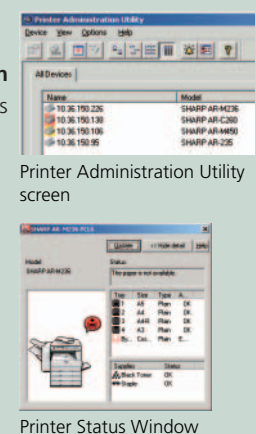
The AR-M236 works as a network printer when equipped with the optional AR-P17, giving it TCP/IP support and allowing printing in a Windows® network environment. By adding the optional AR-NC5J Print Server Card, the AR-M236 becomes compatible with most of today's available network operating systems and protocols and can be used in mixed network environments as well. You can easily integrate the AR-M236 into your existing network and enjoy its powerful network printing via 100Base-TX and 10Base-T Ethernet standards in various network protocols including Novell IPX/SPX, TCP/IP and NetBEUI for Windows and UNIX, and Macintosh EtherTalk*.

*Requires optional AR-PK1 N.



Network Utility Software

Sharp's original **Printer Administration Utility** software makes printer networks easier to manage by allowing network administrators to customise monitored items and view settings such as the IP address directly from their PC. **Printer Status Windows** conveniently allow you to monitor important printer information on your PC, including on-line/off-line status, name of the active print job, and machine conditions such as amount of paper or toner.



Various Printing Functions

- **Proof Printing** allows you to check a trial set before printing out entire multiple-page documents in order to avoid printing mistakes and wasted paper and time.
- **Carbon Copy Printing** prints out the same page of a document onto up to three*1 different kinds of paper from separate, multiple trays.
- **Direct Printing without Printer Driver** prints out PDF*2 or TIFF*3 files without opening applications or using printer drivers. Plus, this function enables e-mail printing, which automatically prints out the attached files when the AR-M236 receives e-mail.

*1: Optional paper feed unit required. *2: Direct PDF printing requires optional AR-PK1 N. *3: Certain types of TIFF and PDF files may not print out this way.

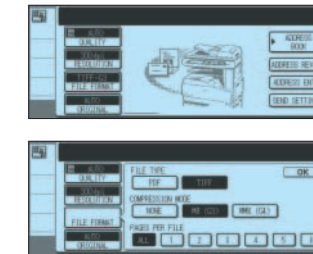
OTHER KEY FEATURES

- Duplex printing, Pamphlet Style printing
- N-up, Fit-to-Page, Watermarks, Mirror Image
- Barcode font compatibility, form/font download

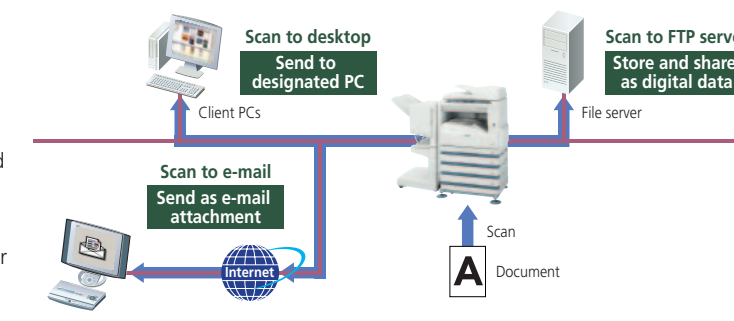
NETWORK SCANNING (option)

A3 Network Scanning

The optional AR-NS2 Network Scanner Expansion Kit turns the AR-M236 into a convenient monochrome network scanner. With the touch of a few buttons, you can choose one of three ways to distribute your scanned documents.



Scan to E-mail allows you to send documents as an attachment to any e-mail address over the Internet. Additionally, an "ad hoc" feature allows you to conveniently enter an e-mail subject title or file name from the touch-screen LCD. **Scan to Desktop** enables you to send scanned documents directly to your desktop computer. And with Sharpdesk™, Sharp's powerful but easy-to-use document management software (see below), editing and managing scanned documents is easier than ever.



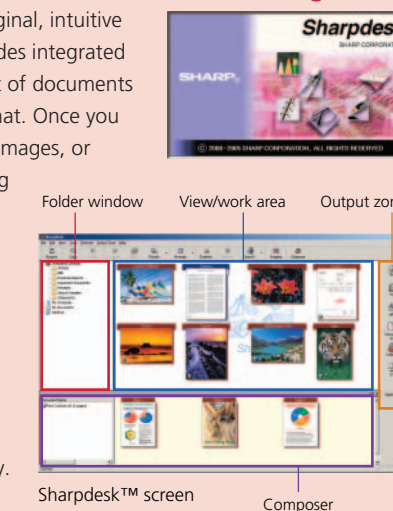
LDAP Compatibility for Network Scanning

Built-in LDAP (lightweight directory access protocol) support eliminates the need to enter or register an entire e-mail address from the LCD control panel. Simply enter the first few letters of the recipient's name and the AR-M236 displays a list of possible matches from names and e-mail addresses on your company's LDAP server. This feature saves precious time and lets you avoid errors when typing e-mail addresses.



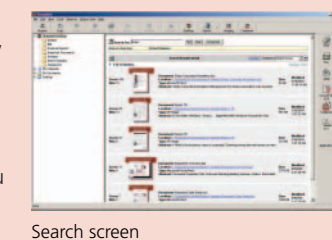
Sharpdesk™ for Total Document Management

Sharpdesk™ is an original, intuitive application that provides integrated desktop management of documents regardless of the format. Once you scan documents and images, or drag-and-drop existing files on your PC into Sharpdesk™, you can view their thumbnail images and organise, edit, search and distribute your documents in **over 200 file formats** for maximum productivity.



VIEW & SEARCH

Sharpdesk's built-in **Search engine** displays results clearly and logically, making it fast and easy to find and retrieve scanned documents or any electronic file on your PC. You can also **view files** in their native format by dragging and dropping them onto Sharpdesk's **View/Work area**, where they will be displayed as easy-to-recognise thumbnail images. Sharpdesk supports over 200 kinds of file formats, including Excel, Word, TIFF, JPEG and BMP.



EDIT & PROOFREAD

Sharpdesk Composer lets you combine different types of files into a single document through simple drag-and-drop operation. **Image Editor** provides a range of useful annotation tools such as labels, stamps and marks, allowing network users to check and proofread documents without overwriting the original files and without having to print out a hard copy.

