



ACUSON S2000™ Ultrasound System

Transducers

Release 1.6

www.siemens.com/healthcare

SIEMENS



7CF2 Transducer

Frequency Bandwidth:	2 — 7 MHz
Exam Types:	Abdomen, Fetal Echo, OB/GYN, Pelvis, Renal

Design Attributes:

- Lightweight transducer with flexible cable
- Ergonomically designed form factor
- User selectable MultiHertz™ multiple frequency imaging
- Wide bandwidth curved array volume transducer



6C2 Transducer

Frequency Bandwidth:	2 — 6 MHz
Compatible With:	ACUSON Sequoia™ ultrasound system
Exam Types:	Abdomen, Fetal Echo, OB/GYN, Pediatric Abdomen, Pelvis, Peripheral Vascular, Renal

Design Attributes:

- Curved Vector Format
 - Hanafy lens transducer technology
 - Ergonomically designed form factor
-



4C1 Transducer

Frequency Bandwidth:	1 — 4.5 MHz
-----------------------------	-------------

Compatible With:	ACUSON Sequoia ultrasound system ACUSON Aspen™ ultrasound system
-------------------------	---

Exam Types:	Abdomen, Fetal Echo, OB/GYN, Pelvis, Renal
--------------------	--

Design Attributes:

- Curved Vector Format
 - Hanafy lens transducer technology
 - User selectable MultiHertz imaging
-



9EVF4 Transducer

Frequency Bandwidth:	4 — 9 MHz
-----------------------------	-----------

Exam Types:	Fetal Echo, Neonatal Head, OB/GYN
--------------------	-----------------------------------

Design Attributes:

- Wide bandwidth endovaginal volume transducer
 - Lightweight transducer with flexible cable
-

**At the time of publication, the U.S. Food and Drug Administration has cleared ultrasound contrast agents only for use in LVO. Check the current regulations for the country in which you are using this system for contrast agent clearance.*



EC9-4 Transducer

Frequency Bandwidth:	3.75 — 9 MHz
----------------------	--------------

Exam Types:	Neonatal Head, OB/GYN, Prostate
-------------	---------------------------------

Design Attributes:

- Ergonomically designed form factor
- Lightweight transducer with flexible cable



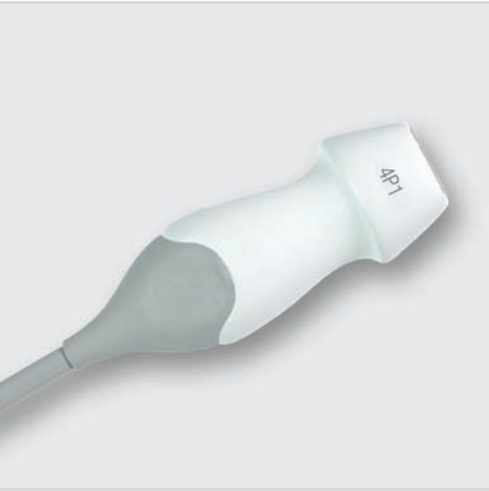
EV-8C4 Transducer

Frequency Bandwidth:	4 – 9 MHz
----------------------	-----------

Exam types:	Endovaginal gynecology, endovaginal obstetrics
-------------	--

Features:

- Tightly curved format
- Wide field-of-view
- User-selectable Wideband MultiHertz imaging
- Harmonic Compounding



4P1 Transducer

Frequency Bandwidth:	1 — 4.5 MHz
Exam Types:	Abdomen, Adult Echo, Fetal Echo, OB/GYN, Pediatric Echo, Pelvis, Renal, Transcranial

Design Attributes:

- Multi-D™ matrix array transducer
 - Ergonomically designed form factor
 - Lightweight transducer with flexible cable
-



10V4 Transducer

Frequency Bandwidth:	4 — 10 MHz
Compatible With:	ACUSON Sequoia ultrasound system
Exam Types:	Neonatal Echo, Neonatal Head, Pediatric Abdomen, Pediatric Echo, Pelvis, Renal

Design Attributes:

- Vector™ wide-view imaging format
- User selectable MultiHertz imaging



8V3 Transducer

Frequency Bandwidth:	2.5 — 8 MHz
Compatible With:	ACUSON Sequoia ultrasound system
Exam Types:	Fetal Echo, Neonatal Echo, Neonatal Head, Pediatric Abdomen, Pediatric Echo

Design Attributes:

- Hanafy lens transducer technology
- Vector imaging format
- User selectable MultiHertz imaging



4V1 Transducer

Frequency Bandwidth:	1 — 4.5 MHz
Compatible With:	ACUSON Sequoia ultrasound system ACUSON Aspen ultrasound system
Exam Types:	Abdomen, Fetal Echo, OB/GYN Pelvis, Renal

Design Attributes:

- Hanafy lens transducer technology
- User selectable MultiHertz imaging



4V1c Transducer

Frequency Bandwidth:	1 — 4.5 MHz
Compatible With:	ACUSON Sequoia ultrasound system
Exam Types:	Adult Echo, Pediatric Echo

Design Attributes:

- Hanafy lens transducer technology
 - Vector imaging format
 - User selectable MultiHertz imaging
 - RF shielding
-



18L6 HD Transducer

Frequency Bandwidth:	5.5 — 18 MHz
Exam Types:	Breast, Cerebrovascular, Digital, Musculoskeletal, Penile, Peripheral Vascular, Testicle, Thyroid

Design Attributes:

- Hanafy lens transducer technology
 - Patented ergonomic design with Elastogrip™ ergonomic grip coating
 - Extra-long cable (2.1 m) for ease of use
-



14L5 SP Transducer

Frequency Bandwidth:	5 — 14 MHz
Selectable 2D Frequencies:	6.0, 10.0, 14.0 MHz
Selectable THI Frequencies:	11.0, 14.0 MHz
Selectable Color Doppler Frequencies:	5.5, 6.25, 7.5 MHz
Selectable PW Doppler Frequencies:	5.5, 6.25, 7.5 MHz
2D Steering Angle:	max +/- 20°
Color Doppler Steering Angle:	max +/- 20°
PW Doppler Steering Angle:	max +/- 20°
Number of Elements:	128
Footprint:	26 mm
Maximum Field of View:	40°
Maximum Display Depth:	60 mm
Biopsy Guide:	Not Available
Exam Types:	Breast, Cerebrovascular, Digital, Intraoperative Abdomen, Intraoperative Vascular, Musculoskeletal, Testicle, Thyroid

Design Attributes:

- Lightweight transducer with flexible cable
- Ergonomically designed form factor
- Virtual format imaging
- Sterilizable high resolution linear array for special applications



14L5 Transducer

Frequency Bandwidth:	5 — 14 MHz
Exam Types:	Breast, Cerebrovascular, Digital, Musculoskeletal, OB/GYN, Pediatric Abdomen, Pediatric Hip, Penile, Peripheral Vascular, Testicle, Thyroid

Design Attributes:

- Multi-D matrix transducer
- Ergonomically designed form factor
- Lightweight transducer with flexible cable
- Virtual format imaging



9L4 Transducer

Frequency Bandwidth:	4 — 9 MHz
Compatible With:	ACUSON Sequoia ultrasound system
Exam Types:	Breast, Cerebrovascular, Digital, Musculoskeletal, OB/GYN, Pediatric Abdomen, Pediatric Hip, Pelvis, Penile, Peripheral Vascular, Renal, Testicle, Thyroid

Design Attributes:

- Multi-D matrix transducer
- Ergonomically designed form factor
- Lightweight transducer with flexible cable



V5Ms Transducer

Frequency Bandwidth:	3 — 7 MHz
Compatible With:	ACUSON X300™ ultrasound system ACUSON X300 ultrasound system, premium edition ACUSON Sequoia ultrasound system ACUSON Antares™ ultrasound system ACUSON CV70™ cardiovascular system ACUSON Cypress™ cardiovascular system ACUSON Aspen ultrasound system ACUSON 128XP/10C™ echocardiography system
Exam Types:	Transesophageal Echo

Design Attributes:

- Endoscope diameter = 10.5 mm, length = 110 cm
- Adult tip size: width = 14.5 mm, height = 11.5 mm
- Ergonomic design featuring one-hand control with variable speed rotation — 90° per sec
- RF shielding



CW5 Transducer

Selectable CW Doppler Frequencies:	5 MHz
Compatible With:	ACUSON Antares ultrasound system ACUSON X500™ ultrasound system ACUSON X300 ultrasound system SONOLINE G60 S™ ultrasound system ACUSON CV70 cardiovascular system
Exam Types:	Adult Echo, Cerebrovascular, Neonatal Echo, Peripheral Vascular, Pediatric Echo, Transcranial



CW2 Transducer

Compatible With:	ACUSON Antares ultrasound system ACUSON X500 ultrasound system ACUSON X300 ultrasound system SONOLINE G60 S ultrasound system ACUSON CV70 cardiovascular system
Exam Types:	Adult Echo, Cerebrovascular, Neonatal Echo, Pediatric Echo, Peripheral Vascular, Transcranial

128XP/10C, ACUSON, Antares, Aspen, CV70, Cypress, Elastogrip, G60 S, Multi-D, MultiHertz, S2000, Sequoia, Vector, X300 and X500 are trademarks of Siemens Medical Solutions USA, Inc.

Local Contact Information

Siemens Medical Solutions USA, Inc.
51 Valley Stream Parkway
Malvern, PA 19355-1406 USA
Telephone: +1-888-826-9702
www.usa.siemens.com/healthcare

Europe: + 49 9131 84-0
Asia Pacific: + 65 6490 6000

Global Business Unit Address

Siemens Medical Solutions USA, Inc.
Ultrasound
1230 Shorebird Way
Mountain View, CA 94043 USA
Telephone: +1-888-826-9702
www.siemens.com/healthcare

Global Siemens Headquarters

Siemens AG
Wittelsbacherplatz 2
80333 Munich
Germany

**Global Siemens
Healthcare Headquarters**

Global Siemens AG
Healthcare Sector
Henkestrasse 127
91052 Erlangen
Germany
Telephone: + 49 9131 84-0
www.siemens.com/healthcare

Legal Manufacturer

Siemens Medical Solutions USA, Inc.
Ultrasound
1230 Shorebird Way
Mountain View, CA 94043 USA
Telephone: +1-888-826-9702
www.siemens.com/healthcare