

SORISA® 



IMPACT

Latest generation cavitation systems



IMPACT

Sculpt your figure at the speed of sound

SORISA has developed **IMPACT** as a real **alternative** to surgical liposuction and as **the most effective solution** for applying body treatments.

IMPACT is principally designed to reduce the volume of localized adiposity quickly and effectively, by applying ultrasound at 40 KHz, using a cavitation process on the fatty tissue. In addition, IMPACT **combines cavitation with electroporation**, which multiplies the effects of both techniques with the anti-cellulite, reaffirming cosmetic gel.

Say goodbye
to localized
fat

Its **intelligent SMARTCAV probes** make it the safest, most effective, comfortable and lasting units on the market.

IMPACT is the **global solution** for body treatments, as it not only treats one condition, or localized adiposity, but with only one treatment you can **reduce** localized fat, **reduce** cellulite and **reaffirm** the skin.

TECHNOLOGICAL FOUNDATIONS

The technological foundation of **IMPACT** is the perfect combination between the use of ultrasound at 40 KHz with electroporation, to destroy the subcutaneous fat deposits in more difficult areas.

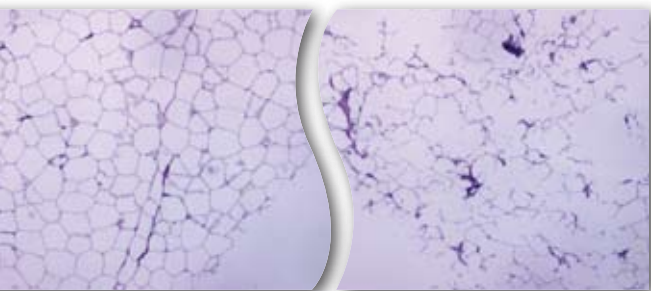
The combined action of ultrasound, electroporation and an active gel acts to sculpt the body causing significant inch-loss , acting not only on the localized adiposity but also on cellulite and skin flaccidity.

The CAVITATION phenomenon

Cavitation is the formation of bubbles inside a fluid, liquid or biological tissue caused by sonic vibrations. These bubbles may be stable, grow and collapse (implosion), causing a mechanical action on the tissue that liberates the energy they had accumulated. The cavitation capability of ultrasound is related to its frequency, which also determines the size of the bubbles.

The aim of cavitation is to affect the fatty tissue to destroy adipocytes (thus liberating the fat stored) non-invasively and safely. With this you can reduce the volume of the area you wish from the very first session with **IMPACT**.

Our efforts in recent years in research led by our Medical Division, where we have studied **the phenomenon of cavitation** with leading entities such as the Oxford University Institute of Biomedical Engineering, have led us to become experts in cavitation technology. Thanks to this knowledge, **SORISA** has manufactured **IMPACT**, a unit that incorporates the latest generation of cavitation.



Normal adipose tissue

Adipose tissue destroyed after the cavitation process

ELECTROPORATION

Electroporation consists of the use of mid-frequency currents to open transitory micropores in the external layer of skin and in the cell membrane, which enables it to serve as a vehicle for both ionic and non-ionic substances and large molecules, allowing incorporation of a greater number of **ACTIVE PRODUCTS** in professional practice. Electroporation is also popularly known as mesotherapy without needles.

The combined action of ultrasound, electroporation and an active gel acts to sculpt the body causing significant inch-loss, acting not only on the localized adiposity but also on cellulite and skin flaccidity.

Sessions with **IMPACT** are divided into different parts, first the action of the **ultrasound** is **combined** with the **active gel** (G5 "Anti-cellulite" treatment gel or ToneActif "Reaffirming" gel) with **electroporation currents**. After applying both techniques (carried out together, as the ultrasound probe is also the electrode for electroporation currents), drainage is performed using pressotherapy to **PRODUCE DRAINAGE OF TISSUE**.



Results proven in clinical studies:

IMPACT has been designed under the supervision of our Medical Research Department and rigorous clinical trials have been held, which have demonstrated the efficiency and safety of our technology in terms of the benefits and results proven in both men and woman of various ages.

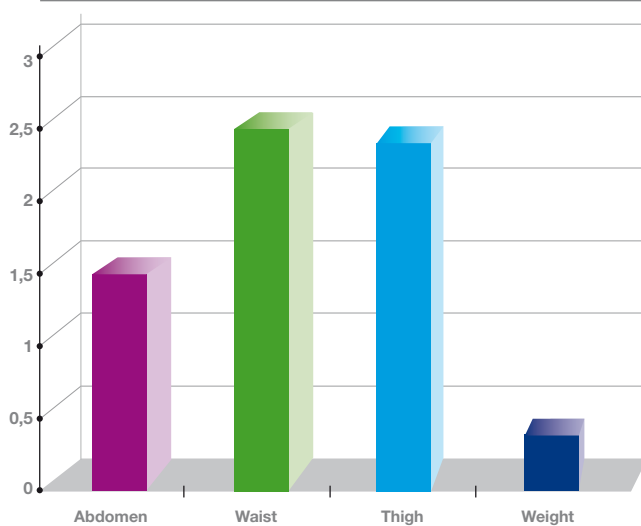


The solution for body sculpting

IMPACT is the real alternative to surgical liposuction and is the most effective solution for body sculpting treatments:

- Fat percentage reduction
- Cellulite reduction
- Skin reaffirming

Average loss (cm.)



Graph with the average inch-loss (for abdomen, waist and thigh) and weight loss, after an average of 5 IMPACT treatment sessions.



Before

Later



Before

Later



Before

Later



Before

Later

COMPETITIVE ADVANTAGES

SATISFIED CUSTOMERS from day one: As the treatment is non-invasive and painless, you can appreciate the results after every session.

SAFE, EFFECTIVE, COMFORTABLE AND LASTING: IMPACT incorporates exclusive intelligent probes with SMARTCAV technology that provide competitive advantages over equipment by the competition:

+ INFORMATION

The IMPACT probes are the only ones on the market able to provide information, at all times, on the state of the treatment (active or on standby), the ultrasonic power emitted, thus guaranteeing maximum efficiency, and the intensity of electroporation.

+ CONTROL

The IMPACT probes can identify whether the unit is coupled or not and, therefore, only emit when they are coupled and only discount this time from the treatment. This means you can know the exact doses of energy and that the treatment minutes are correct.

+ PERFORMANCE

The IMPACT amplifier automatically searches for the resonant frequency, which prevents the probe heating up, for maximum performance.

+ USEFUL LIFE

Thanks to the connection sensor, the unit only emits power when it is properly coupled, meaning it does not work at no load and suffers less wear.

DOUBLE ACTION, TRIPLE BENEFIT

Cavitation and electroporation work to provide a GLOBAL body treatment and so treat not only the adiposity, but also other defects such as cellulite and skin flaccidity. So in the same session, the treatment:

- **Decreases** the perimeter of localised fat .
- **Reduces** the cellulite nodules.
- **Reaffirms** and improves the quality of the skin.

COMPACT

Its column-based design with wheels enables mobility in any cubicle.

INTUITIVE AND EASY TO USE

The unit has a touch screen, which intuitively aids all pre-set operation modes and protocols: Free mode and in the pre-set treatments.

HIGH PROFITABILITY

The fact that this unit is perfect for performing different treatments all year round, combined with its low maintenance cost, makes it one of the most profitable units on the market.

INTEGRAL TREATMENT

The Pressotherapy and Drainage units PRESOR 03 and IMPRESS 240 are ideal complements for IMPACT.





Quality and technological innovation serving well-being

Since 1973 the prestige of SORISA has been guaranteed as a manufacturer and marketer of pioneering equipment in the medical, aesthetics and well-being sector, and has positioned the company as a global supplier in both domestic and international markets.

Choosing SORISA means counting on the backing and guidance of a group of professionals directed towards customer service and with an international structure present in more than 100 countries all over the world.

The technological innovation capability of SOR Internacional is the fingerprint of a company that, throughout recent decades, has reached significant milestones in technological innovation through its RDI and medical research departments.

All SORISA products comply with all legislation required by the Spanish Ministry of Health and Consumer Affairs and with the European regulations. During manufacture we follow the most stringent quality controls (ISO9001 and ISO13485), which certify that our units ensure effective results in each and every one of the treatments offered, which is proven in the numerous clinical trials we perform.

These characteristics ensure profitability for centres that have chosen SORISA equipment.



Accessories included



Ref. 279.292
Flat probe (1 unit)



Ref. 279.304
Concave probe (1 unit)



Ref. 31.506
Body plate 200 (1 unit)



Ref. 10.985
Banana return probe (1 unit)



Ref. 10.993
Treatment gel G5 (1 unit)



Ref. 31.501
4 adhesive body plates



Ref. 32.001
Transmitter gel for ultrasound (1 unit)



Ref. 11.072
Toneactif Gel (1 ud.)



Ref. 6.853
Crocodile clip (1 unit)



Ref. 60.503
Elastic strips 150x8 cm
PG-945/15 FIAB (1 ud.)



Ref. 60.502
Elastic strips 80x8 cm
PG-945/8 FIAB (1 ud.)



TECHNICAL CHARACTERISTICS

Interface	5,7" touch screen
Intelligent probes	With exclusive SMARTCAV™ technology
Maximum consumption	300 W
Working temperature	10°C-40°C
Programs 45 preset, 9 programmable	45 preset, 9 programmable

CAVITATION

Frequency	40 KHz
Maximum power	3 W/cm ³
Mode	Pulse and continuous
Nº of probes	2; one flat and one concave
Diameter of the probe	55 mm

ELECTROPORATION

Maximum stimulation voltage	140 Vpp ± 10% on 2KΩ
Wave	Square of 2Hz with work cycle of 10% (50 ms)
Carrier	Square of 2.5 kHz ± 3% without continuous component
Impedance	150Ω

SORISA®

SOR Internacional, S.A.

CENTRAL OFFICES

C/ Moianès, 13 – Pol. Ind. Can Casablanças
 08192 Sant Quirze del Vallès - Barcelona - España
 Tel. +34 93 721 69 20 - Fax +34 93 721 47 74
 www.sorisa.com · e-mail: sorisa@sorisa.com

CUSTOMER SERVICE:

Tel. +34 93 721 69 20 · e-mail: info@sorisa.com

INTERNATIONAL DEPARTMENT

Tel.: +34 - 93 721 69 20
 Fax.: +34 - 93 721 47 86
 e-mail: export@sorisa.com

Ref. 970568 IMPACT BROCHURE ENG / ABR 2009 / Printed by: RAF Impresores, S.L. / Graphic Design: Entrezones.

UL Inc. certifies that SOR Internacional S.A. complies with the quality standards ISO-9001/ISO-13485.

