
HPLC COLUMN HEATERS

CROCO-CIL[®]

+30°C to +99°C

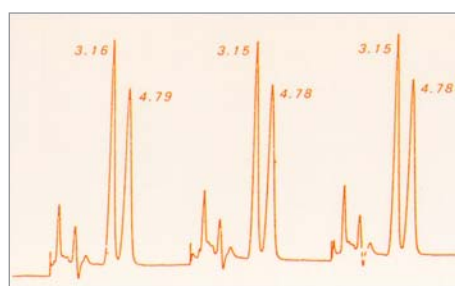
CALIBRATION - VALIDATION FUNCTION

YOUR HPLC COLUMN AT THE TRUE TEMPERATURE



1 Oven 100 040 220P 2 Oven 100 040 220TW with Rheodyne Valve 7725i 3 Electronic regulator

- ⇒ LINEARITY
- ⇒ REPRODUCIBILITY
- ⇒ CALIBRATION FUNCTION (CIL)



REPRODUCIBILITY AT 75°C

Variation rate of retention time < 1%
Conditions : binary gradient

® = CLUZEAU INFO LABO

C O M P A C T P R A C T I C A L A C C U R A T E

VALIDATION / QUALIFICATION

... it's much more convenient to do it yourself ...

CROCO-CIL® = TEMPERATURE MASTER !

Do you want to validate the temperature of your HPLC column heater yourself ? Introducing a new concept for auditing your CROCO-CIL® column heater : **Calibration Intelligence Linearisation (CIL)**.

The electronic regulator incorporates a LCD unit which displays both pre-set temperature chosen by the user (increment of 1°C) and actual temperature measured inside the oven (increment of 0.1°C). All CROCO-CIL® column heaters include the automatic temperature linearisation program which enables you to eliminate by yourself a possible discrepancy between the captor temperature displayed by 1/10°C, and the temperature measured in the oven by an independent calibrated thermometer.

CROCO-CIL® all models below include electronic regulator

S **STANDARD CROCO-CIL® : Elevated temperature control**

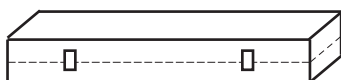
The opposite metal mesh beds guarantee uniform temperature spread as the metal acts as an ideal heat conductor while, at the same time, allowing air to circulate freely. (CIL patent)

AMBIENT TO 99°C



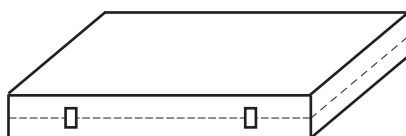
Short :
25 x 8 x 8 cm
100-025-220P
Interne dim: 24(L)x 4.5(l) cm

Analytical column from 3 cm to 10 cm length and guard column



Standard :
40 x 8 x 8 cm
100-040-220P
Interne dim: 38(L)x 4.5(l) cm

Any analytical column and microcolumn up to 30 cm length and guard column



Triple width :
40 x 24 x 8 cm
100-040-220TW
Interne dim: 38(L)x 20(l) cm

Up to 15 analytical columns
3 preparative columns of 20 mm I. D.



Specifications for all models :

Temperature range	: ambient to 99°C
Stability (oven)	: +/- 0.2°C (recorded of 4 different spots in the oven)
Accuracy	: +/- 1°C
Temperature repeatability	: +/- 0.5°C
Temperature double security	: real time temperature checking every 2 seconds
Heat-up speed	: 5°C/min
Temperature on LCD	: 1-temperature set by increment of 1°C 2-temperature of the sensor by 0.1°C
Security sensor,	: - scrutinize on line the heaters and the - digital display of error message, cutoff, - automatic cutoff device at 115°C.
Communication	: Manual, RS232 and remote
Power	: 120VA
Line voltage	: 230V-50 Hz/115V-60Hz
Weight :	
Electronic control module	: 3.5 kg Oven : 1 to 5 kg

* the specifications are not guaranteed at the extremes of the range



99SOFT

OPTIONAL SOFTWARE OF TRACEABILITY OF THE TEMPERATURE

FOR COLUMN HEATERS
CIL Cluzeau Info Labo

Temperature recording : 40°C
Starting time : 11/12/2003 10:14:16
11/12/2003 10:14:46 ; 40 ; 40.0
11/12/2003 10:15:16 ; 40 ; 40.0
11/12/2003 10:15:46 ; 40 ; 40.0
11/12/2003 10:16:16 ; 40 ; 40.0
11/12/2003 10:16:46 ; 40 ; 40.0
11/12/2003 10:17:16 ; 40 ; 40.0
Ending time : 11/12/2003 10:17:25

TO ORDER : PN# 99SOFT

amchro GmbH

Chromatographie- und Laborzubehör

Schulstr. 48
D-65795 Hattersheim, Germany

Tel: (+49) 06190-978117

Fax: (+49) 06190-978107

email : amchrogmbh@aol.com