

# QuesCom 400 IP/GSM

IMMEDIATE TANGIBLE SAVINGS

## Why you should always include a QuesCom 400 IP/GSM gateway in your Cisco IP Telephony solution?

Landline to mobile phone calls typically are twice the cost of a mobile to mobile phone call. This is because the landline operators charge the phone users additional connection fees when calling a mobile phone number.

The QuesCom 400 IP/GSM addresses this situation by directly connecting to the mobile phone network and therefore eliminating all connection charges.

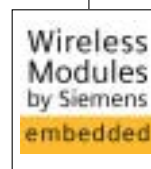
Thus, an IP/GSM gateway allows a customer to offset the cost of migration to IP with immediate savings on the monthly phone bill. Typically these savings are enough to pay for the capital cost of all IP phones within a few years.

Basically meaning that "All IP phones are free".



"The Cisco Systems, Inc. Cisco Compatible logo signifies that QuesCom product has undergone interoperability testing by QuesCom together with Cisco and/or a third party test-house based on testing criteria set by Cisco. QuesCom is solely responsible for the support and warranty of its product. Cisco makes no warranties, express or implied, with respect to QuesCom product or its interoperability with the listed Cisco product(s) and disclaims any implied warranties of merchantability, fitness for a particular use or against infringement."

The following version(s) of QuesCom 400 IP/GSM has been tested for interoperability with the listed product(s) of Cisco Systems, Inc. QuesCom 400 IP/GSM 3.50 compatible with Cisco CallManager 3.3.



**T**he QuesCom 400 IP/GSM provides immediate return on investment on your Cisco IP telephony deployment allowing cost-savings up to 90% for GSM calls. The gateway connects a VoIP network directly with the public GSM network avoiding the need to route calls to cell-phones over the standard landline. As a standalone device the QuesCom 400 IP/GSM may be dropped into existing voice solutions without any downtime as well as being part of a migration strategy towards IP Telephony.

**First GSM gateway for IP-PBX**

**Return on investment in less than 1 year**

**From 2 up to 60 GSM channels**

**Compatible with CCME, CCM 3.2, CCM 3.3, CCM 4.0**

**Integrated SMS gateway**



## QuesCom 400 IP/GSM

IMMEDIATE TANGIBLE SAVINGS

The QuesCom 400 IP/GSM enables businesses a quick return on investment and pays for IP phones in less than 3 years.

### Powerful and flexible management

The QuesCom 400 IP/GSM has an administration console accessible via Microsoft® Management Console. It is used to control and view GSM parameters such as:

- the number of successful calls,
- the number of failed calls,
- the status of ports used for each GSM module,
- the level of the radio signal reception.

### Hardware appliance

The QuesCom 400 IP/GSM gateway is a fully featured appliance. As a compact standalone device it has no dependencies on OS type or application versions and capacity is easily extended by the addition of more devices.

### Scalability

The QuesCom 400 IP/GSM is available with configurations starting from 2 up to 60 GSM channels per stack. Each GSM module is dual band and supports both the GSM 900 and DCS 1800 standards.

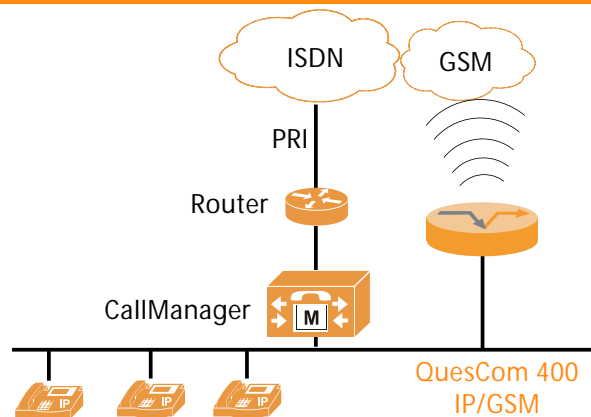
### INTEROPERABILITY & COMPATIBILITY

<b>CODECS</b>	Support G.711, G.723.1, G.729a and GSM Compatible with G.729
<b>GSM</b>	All SIM types Both European bands GSM 900 & DCS 1800
<b>VoIP</b>	H.323, SIP, Diffserv marking
<b>Local network</b>	10/100 Ethernet autosensing
<b>CCM</b>	Compatible CCM 3.2, 3.3, 4.0 & Express
<b>Management</b>	Serial Console, Telnet, HTTP and Microsoft Management Console

### TECHNICAL SPECIFICATIONS

<b>Dimensions</b>	Rackable 19", 1U 400 mm L x 325 mm D x 45 mm H
<b>Weight</b>	Maximum 8 Kg
<b>Power requirements</b>	Autoranging Power Supply 100-240 V AC 150 VA per QuesCom 400
<b>Compliance</b>	FCC Class B Part 15, CE Marking

### ARCHITECTURE



QuesCom 400 IP/GSM is connected directly to the IP-PBX over the existing IP network using either the H.323 or SIP networking protocol. In either case, once the redirect parameters across the IP-PBX have been defined, it is immediately operational – thereby dramatically reducing the level of network downtime associated with traditional communications network upgrades.

### Interoperability

The QuesCom 400 IP/GSM supports G.711, G.723.1, G.729a and GSM codecs in order to cover all possible cases. It can handle calls coming from a local or from a remote site. It is certified compatible with Cisco CallManager 3.3, compatible with Cisco CallManager 3.2 and Express and has also been tested with Cisco CallManager 4.0.

### Overflow and reliability

If all of the GSM modules are busy, the QuesCom 400 IP/GSM can be configured to send overflow calls to the fixed network. This careful management of calls also makes it possible to handle potential saturation of the GSM network or failure of the gateways.

### Multiple antenna connectivity options

- A 4-GSM channel antenna (length 2,50m)
- Option: 4-to-1 antenna coupler (1 antenna for 16 GSM channels)
- Option: cable extension up to 30 meters. ■

**QuesCom**

[www.quescom.com](http://www.quescom.com)  
[info@quescom.com](mailto:info@quescom.com)

### Headquarters

7, rue Soutrane  
B.P. 327  
06906 Sophia Antipolis Cedex  
France  
Tel. : +33 (0)4 97 23 48 48  
Fax : +33 (0)4 97 23 48 49