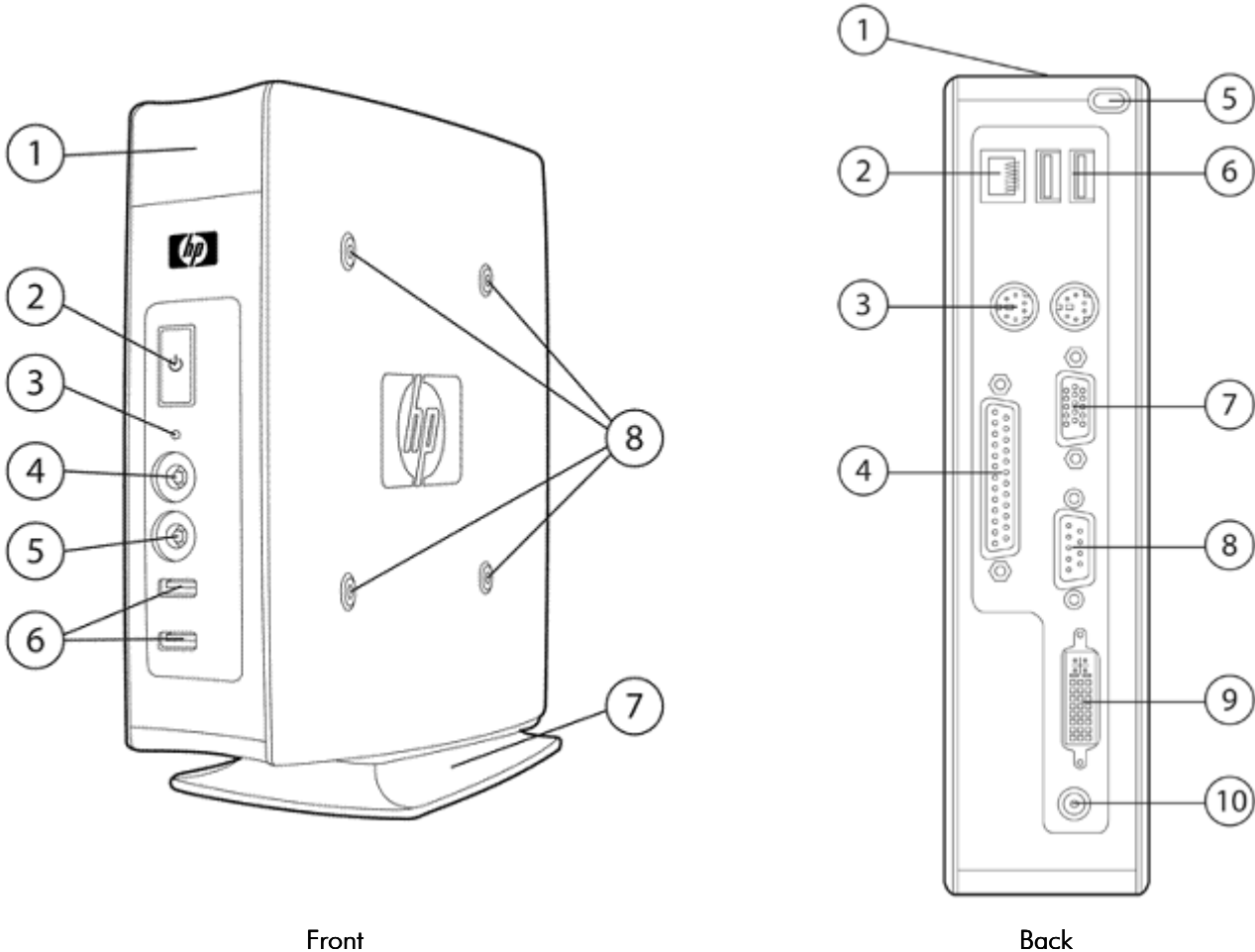


### Overview

### Introduction

The HP t5630 Thin Client delivers great value with a familiar Windows experience at the right performance level. Microsoft Windows XP Embedded SP2 operating system combined with a full-featured browser, Enhanced Write Filter, Symantec Endpoint Protection, terminal emulations, native dual monitor and widescreen support make the t5630 the optimum choice for business environments requiring a cost-effective thin client with flexibility and power.



Front

Back

1. Secure USB compartment (2 USB connectors)
2. Power button with LED
3. Flash storage activity indicator
4. Audio connector (mic in)
5. Audio connector (headphone out)
6. USB connectors (2)
7. Vertical stand (removable)
8. VESA mounting points (4)  
(standard in Germany only; available as an option in other countries)

1. Cable lock slot
2. 10/100/1000 Ethernet RJ-45 connector
3. PS/2 connectors (2)
4. Parallel port
5. Cable management feature
6. USB connectors (2)
7. VGA connector
8. Serial port
9. DVI-D connector
10. +12V DC power input

## Overview

### At A Glance

- Microsoft® Windows® XP Embedded SP2 with support for local applications
- VIA Eden 1 GHz processor for great performance
- 1 GB Flash memory provides ample storage for applications and drivers
- Up to 1 GB system memory (64 MB reserved for video)
- Includes one parallel, one serial, two PS/2, and six USB 2.0 ports (two in back, two in front, and two in secure USB compartment)
- MIC in and Audio out ports in front
- Enhanced Write Filter and Symantec Endpoint Protection Agent for enhanced data security
- Built in dual monitor support (VGA and DVI-D native)
- ENERGY STAR® qualified
- HP Device Manager lets you remotely manage client devices from a central location.
- HP's alliance with Altiris brings a leading management solution to the thin client market. Altiris Deployment Solution's standards-based, advanced thin client management solution helps reduce the costs of deploying, updating, and maintaining your thin clients. A free client license is included with each HP thin client.
- Exclusive HP ThinState Tools offers in-box, easy-to-use image deployment and recovery tools.
- Support for HP Client Automation for quick and easy deployment of images and thin client management. HP Client Automation Starter Edition is available as a free download. For more details visit: [www.hp.com](http://www.hp.com).
- Supports HP Universal Print Driver for Windows, a single, intelligent print driver that provides instant access to a wide range of HP print devices. The HP UPD is available for free at: [www.hp.com/go/upd](http://www.hp.com/go/upd).
- HP Total Care Warranty and Services: limited three-year hardware warranty in most regions. HP Care Pack Services extend service contracts which go beyond your standard warranties. For more details visit: [www.hp.com/go/lookuptool](http://www.hp.com/go/lookuptool).

## Models

FQ801AA#ABA	<b>Model Name</b>	HP t5630 Thin Client
FQ801AT#ABA (SmartBuy or Promo)	<b>Processor</b>	VIA Eden 1 GHz
	<b>Flash</b>	1 GB
FS437AA#ABA (TAA compliant) <sup>1</sup>	<b>System Memory</b>	1 GB (64 MB reserved for video)
	<b>Operating System</b>	Microsoft Windows XP Embedded SP2
	<b>Keyboard</b>	Keyboard (USB or PS/2) varies by region
	<b>Mouse</b>	Mouse (USB or PS/2) varies by region

<sup>1</sup> Product complies with U.S. Trade Agreement (TAA). Available in U.S. only.

## Options

	<b>NOTE:</b> Options are available as separate purchase <sup>1</sup>	<b>Part Number</b>
<b>Accessories</b>	HP Quick Release Kit	EM870AA
	HP Quick Release/VESA Panels Kit	FV248AA
	HP Integrated Work Center Stand	GN783AA
	50 Watt External Power Supply	FJ851AA#ABA
<b>Third-Party Communications</b>	Belkin USB Wireless 802.11b/g <sup>2,3</sup> (Security: WEP, WPA & WPA2 Only) (North America, Singapore, Hong Kong, Malaysia, Philippines, India, Korea, China, Taiwan, Australia, New Zealand) To order, visit <a href="http://www.belkin.com">www.belkin.com</a> , search for HP4050, and order online	Belkin part number: HP4050
	Belkin USB Wireless 802.11b/g <sup>2,3</sup> (Security: WEP, WPA & WPA2 Only) (Germany, Netherlands, Spain, Italy, France, Poland, Hungary, Czech, Russia, Bulgaria, Romania, United Kingdom, Sweden/Scandinavia) To order, visit <a href="http://www.belkin.com">www.belkin.com</a> , search for HP4050ea, and order online	Belkin part number: HP4050ea
<b>Touch Screens</b>	ELO Touch 1529L Flat Panel <sup>2</sup>	E926109
	HP L5006tm LCD Touchscreen (available in selected countries)	RB146AA
<b>Security</b>	HP USB Smartcard Keyboard	ED707AA
	SCM USB Smart Card Reader SCR331 <sup>2</sup>	904622
	HP/Kensington Cable Lock	PC766A
<b>Input Devices</b>	HP PS/2 Standard Keyboard	DT527A#ABA
	HP USB Standard Keyboard	DT528A#ABA
	HP USB Smartcard Keyboard	ED707AA#ABA
	HP PS/2 2-Button Optical Scroll Mouse	EY703AA
	HP USB 2-Button Optical Scroll Mouse	DC172B
<b>Care Pack Services<sup>4</sup></b>	9x5 Next-Business-Day Advanced Exchange – 3 Years	
	9x5 Next-Business-Day On-Site Coverage – 3 Years	

<sup>1</sup> The warranties for HP branded products are set forth in the express limited warranty statements accompanying such products. Although third-party products may work effectively on HP thin clients, these third-party products are provided "AS IS." HP does not support or warrant third-party products, including the interoperability of such products with HP thin clients. However, third-party manufacturers and vendors may provide their own warranties and support directly to you. Please contact the manufacturers or vendors for hardware or software support on their products.

<sup>2</sup> This is a third-party product. Product, warranty and support available directly from third-party vendor.

<sup>3</sup> Wireless access point and Internet service sold separately. Roaming not supported. Not certified in Australia, China, Indonesia, Korea, Malaysia, New Zealand, Pakistan, Philippines, or Taiwan.

<sup>4</sup> Service levels and response times for HP Care Pack Services may vary depending on your geographic location. Service starts from date of hardware purchase. Restrictions and limitations apply. HP Care Pack Services extend service contracts beyond the standard warranties. To choose the right level of service for your HP product, use the HP Care Pack Services Lookup Tool at:

[www.hp.com/go/lookuptool](http://www.hp.com/go/lookuptool). Additional HP Care Pack Services information by product is available at: [www.hp.com/hps/carepack](http://www.hp.com/hps/carepack).

## Technical Specifications

Processor	VIA Eden 1 GHz		
Chipsets	VIA VX800 north/south bridge unified chip		
Memory	Flash	1 GB	
	System Memory	Up to 1 GB (64 MB reserved for video)	
Graphics	VIAChrome9 HC3 Integrated Graphics Processor		
	<b>Resolutions</b>	<b>Refresh Rates</b>	<b>Color Depth</b>
		(Single Monitor Mode)	(Single Monitor Mode)
	640 x 480	60, 72, 75, 85 Hz	8, 16, 32 bit
	800 x 600	60, 70, 72, 75, 85 Hz	8, 16, 32 bit
	848 x 480	60, 75, 85 Hz	8, 16, 32 bit
	1024 x 480	60 Hz	8, 16, 32 bit
	1024 x 768	60, 70, 72, 75, 85 Hz	8, 16, 32 bit
	1280 x 720	60, 75, 85 Hz	8, 16, 32 bit
	1280 x 768	60 Hz	8, 16, 32 bit
	1280 x 1024	60, 70, 75, 85 Hz	8, 16, 32 bit
	1360 x 768	60 Hz	8, 16, 32 bit
	1368 x 768	60, 75, 85 Hz	8, 16, 32 bit
	1400 x 1050	60 Hz	8, 16, 32 bit
	1440 x 900	60, 75, 85 Hz	8, 16, 32 bit
1600 x 1200	60, 75, 85 Hz	8, 16, 32 bit	
1680 x 1050	60, 75 Hz	8, 16, 32 bit	
1920 x 1080	60, 75 Hz	8, 16, 32 bit	
1920 x 1200	60, 75, 85 Hz	8, 16, 32 bit	

**NOTE:** The table represents a sample of possible modes that this controller is capable of displaying but various factors such as the capability and EDID info returned by the attached monitor, the interface used (D-SUB/DVI-D), and dual monitor mode may limit the availability of modes, color depth, and or refresh rate.

Input/Output/ Peripheral Support	<b>Keyboard</b>	Keyboard (USB or PS/2) varies by region
	<b>Mouse</b>	Mouse (USB or PS/2) varies by region
	<b>Printer</b>	Local and/or network printers (RDP, ICA, LPD)
	<b>Video</b>	VGA-type video output (DB-15) DVI-D digital video output
Audio	<b>Output</b>	Internal amplified speaker 1/8-inch mini-jack, 24-bit stereo, 192-kHz sample rate
	<b>Input</b>	1/8-inch microphone mini-jack, 20-bit stereo, 96-kHz sample rate
Hardware Security	Security lock slot (cable lock sold separately) Secure USB compartment with 2 USB 2.0 ports	
Server Based Computing Protocols	Citrix ICA Microsoft RDP	
Networking	10/100/1000 Ethernet (RJ-45)	



### Technical Specifications

TCP/IP with DNS and DHCP  
Point-to-Point Protocol (PPP), Point-to-Point over Ethernet (PPPoE),  
Point-to-Point Tunneling Protocol (PPTP), Layer-2 Tunneling Protocol (L2TP)  
Server Network Time Protocol (SNTP)  
Simple Network Management Protocol (SNMP)  
Wake on LAN  
PXE

<b>I/O ports and connectors</b>	6 USB 2.0 ports, 1 serial, 1 parallel, 2 PS/2, 1 RJ45, 1 VGA, 1 DVI-D, 1 headphone, 1 microphone														
<b>Resident Operating System</b>	Microsoft Windows XP Embedded SP2														
<b>Languages (MUI)</b>	English, French, German, Spanish, Dutch, Norwegian, Korean, Simplified Chinese, Traditional Chinese, and Japanese														
<b>Server OS Compatibility/Support</b>	Citrix Presentation Server (up to 4.5) Windows Server 2008 Windows 2000/2003 Server families Windows 2000/2003 Server Terminal Services Windows 2000 Advanced Server, Windows 2000 Advance Server Terminal Services VMware Virtual Desktop Infrastructure using RDP														
<b>Session Allocation Managers/Session Brokers</b>	HP Session Allocation Manager (SAM) Citrix XenDesktop DDC broker VMware VDM broker Leostream Desktop Connection Broker (contact vendor directly for broker sales and support) Provision Networks (Quest) Virtual Access Broker (contact vendor directly for broker sales and support)														
<b>Software Included</b>	Microsoft Windows XP Embedded SP2 Citrix ICA 10.x and Microsoft RDP 6.0 Microsoft Internet Explorer 7.0 Windows Media Player 11 Symantec Endpoint Protection Agent HP Device Manager Agent Altiris Deployment Solution (full client license). Altiris Deployment Solution (management console) available as free download from Altiris at: <a href="http://www.altiris.com/hptc">www.altiris.com/hptc</a> HP ThinState for image capture and redeploy TeemTalk Terminal Emulation Suite HP Client Automation (available as a separate download). For details visit <a href="http://www.hp.com">www.hp.com</a> HP Universal Print Driver (available as a free download at <a href="http://www.hp.com/go/upd">www.hp.com/go/upd</a> ) ThinPrint .print TCP client (available as add-on) See <a href="http://www.hp.com/support">www.hp.com/support</a> for list of available add-ons														
<b>Emulations</b>	TeemTalk Terminal Emulator supports these emulations. SSH/SSL is supported in terminal emulation mode allowing users to secure their connections to the host.														
	<table><thead><tr><th><b>Emulation</b></th><th><b>Terminal ID</b></th></tr></thead><tbody><tr><td>ADDS Viewpoint A2</td><td>ADDS-A2</td></tr><tr><td>AIXTerm</td><td>aixterm</td></tr><tr><td>ANSI BBS</td><td>ansi</td></tr><tr><td>AT&amp;T AT 386</td><td>at386-m</td></tr><tr><td>AT&amp;T Dataspeed 4410</td><td>att4410</td></tr><tr><td>Bull BQ3107</td><td>VIP7700, VIP7760</td></tr></tbody></table>	<b>Emulation</b>	<b>Terminal ID</b>	ADDS Viewpoint A2	ADDS-A2	AIXTerm	aixterm	ANSI BBS	ansi	AT&T AT 386	at386-m	AT&T Dataspeed 4410	att4410	Bull BQ3107	VIP7700, VIP7760
<b>Emulation</b>	<b>Terminal ID</b>														
ADDS Viewpoint A2	ADDS-A2														
AIXTerm	aixterm														
ANSI BBS	ansi														
AT&T AT 386	at386-m														
AT&T Dataspeed 4410	att4410														
Bull BQ3107	VIP7700, VIP7760														

### Technical Specifications

Data General Dasher 410/412	dg410
Hewlett Packard HP700- 92/96	2392A, 2622A, 70092, 70094, 70096
Hazeltine 1500	HZ1500
IBM 3151	11, 11-28, 31, 31-28
IBM 3270	3278-2 (24x80 Mono), 3278-3 (32x80 Mono), 3278-4 (43x80 Mono), 3278-5 (27x132 Mono), 3278-2-E (24x80 Color), 3278-3-E (32x80 Color), 3278-4-E (43x80 Color), 3278-5-E (27x132 Color), 3279-2 (24x80 Color), 3279-3 (32x80 Color), 3279-4 (43x80 Color), 3279-5 (27x132 Color), 3287-1 (Printer)
IBM 5250	3179-2 (24x80 Color), 3180-2 (27x132 Mono Msg), 3196-A1 (24x80 Mono), 3477-FC (27x132 Color Msg), 3477-FG (27x132 Mono Msg), 3486-BA (24x80 Mono), 3487-HA (27x132 Mono), 3487-HC (27x132 Color), 3812-1 (Printer), 5251-11 (24x80 Mono), 5291-1 (24x80 Mono), 5292-2 (24x80 Color), 5553-B01 (DBCS Printer), 5555-B01 (DBCS 24x80 Mono), 5555-C01 (DBCS 24x80 Color)
McDonnell Douglas Prism- 8, Prism-12	tt
McDonnell Douglas Prism- 9	tt
Prime PT250	pt250
SCO Console	ansi
Siemens 97801	97801
Stratus V102	v102
Tandem TA6526, TA6530	tn6530-8
Televideo 910	TVI910
Televideo 920	TVI920
Televideo 925	TVI925
Televideo 950	TVI950

## Technical Specifications

Televideo 955	TVI955
Unisys T27	UNISYS-TD830
Viewdata 40	VIEWDATA – 40
Viewdata 80	VIEWDATA – 80
Viewdata Split	VIEWDATA – SPLIT
DEC VT PCTerm	VT-PCTERM
DEC VT100	m2200, vt100, vt101, vt102, vt125, vt131, vt132, vt220, vt240, vt320, vt340, vt420, vt510, vt520, vt525
DEC VT100+	VT100+
DEC VT500 7-bit	m2200, vt100, vt101, vt102, vt125, vt131, vt132, vt220, vt240, vt320, vt340, vt420, vt510, vt520, vt525
DEC VT500 8-bit	m2200, vt100, vt101, vt102, vt125, vt131, vt132, vt220, vt240, vt320, vt340, vt420, vt510, vt520, vt525
DEC VT 52	m2200, vt100, vt101, vt102, vt125, vt131, vt132, vt220, vt240, vt320, vt340, vt420, vt510, vt520, vt525
VT HP220	vt220
VT UTF8	VT-UTF8
Wyse WY370	WYSE-370
Wyse WY50	WYSE-50
Wyse WY50+	WYSE-50
Wyse WY60	WYSE-60
Wyse PCTerm	WYSE-PCTERM

<b>Dimensions H x W x D</b>	<b>Without stand</b>	8.25 x 2.05 x 8.5 in (209.55 x 52.07 x 215.90 mm)
	<b>With stand</b>	8.65 x 2.05 x 8.5 in (219.70 x 52.07 x 215.90 mm)

<b>Weight (approximate)</b>	<b>With stand</b>	3.40 lbs (1.54 kg)
-----------------------------	-------------------	--------------------

<b>Power*</b>	<b>Operating voltage range</b>	100-240 VAC
	<b>Rated line frequency</b>	50-60 Hz
	<b>Power output (max)</b>	50W
	<b>Rated output current (max)</b>	4.16A
	<b>Output voltage</b>	+12V DC
	<b>Power consumption</b>	Average power consumption of this thin client in a typical setup is 14.0 W

\* The actual power consumption at your location could vary and is dependent on many factors including but not limited to software load on the thin client, attached peripherals, and environmental factors.

<b>Environmental</b>	<b>Operating temperature range</b>	50° to 104° F (10° to 40° C)
	<b>Non-operating temperature range</b>	-22° to 140° F (-30 to 60° C)
	<b>Humidity (non-condensing)</b>	10% to 90% operating/5% to 95% non-operating

<b>Regulatory Compliances</b>	<b>Product Safety</b>	International: IEC60950-1, 12:2005, with CB Certificate and all National Deviations US and Canada: UL 60950-1 / CAN/CSA 22.2 No. 60950-1-03,
-------------------------------	-----------------------	---





## Technical Specifications

07:2006, Bi-National Standard for ITE Safety in the US and Canada and is published jointly by UL and CSA.

Europe: EN 60950-1, 06:2003, Information Technology Equipment

### Ergonomics

The product has been tested and found to comply with all applicable GS ergonomic requirements.

### RF Interference

FCC Class B, CE Mark, VCCI

### Warranty

Three-year limited hardware warranty.

**NOTE:** Certain restrictions apply. [Consult the HP Customer Support Center for details.](#)

## Technical Specifications – Environmental Data

**Eco-Label Certifications & Declarations** This product has received or is in the process of being certified to the following approvals and may be labeled with one or more of these marks:

- ENERGY STAR® Category B

**Additional Compliance** This product is in compliance with:

- Restrictions of Hazardous Substances (RoHS) directive - 2002/95/EC.
- Waste Electrical and Electronic Equipment (WEEE) Directive - 2002/96/EC.
- California Proposition 65 (State of California; Safe Drinking Water and Toxic Enforcement Act of 1986).
- Plastics parts weighing over 25 grams used in the product are marked per ISO 11469 and ISO1043.

Energy Consumption	115 VAC	230 VAC	100 VAC
Idle State:	13.90 W	14.32 W	13.70 W
Off Mode:	1.95 W	1.93 W	1.94 W

**NOTE:** This product is in compliance with US executive order 13221, WOL (wake on LAN) disabled.

**NOTE:** The actual power consumption at your location could vary and is dependent on many factors including, but not limited to, software load on the thin client, attached peripherals, and environmental factors.

Heat Dissipation	Idle State:	47.43 BTU/hr	48.86 BTU/hr	46.75 BTU/hr
	Off Mode:	6.66 BTU/hr	6.57 BTU/hr	6.62 BTU/hr

**NOTE:** Heat dissipation is calculated based on the measured watts, assuming the service level is attained for one hour.

**Batteries** This product complies with ISO standards:

- EU Directive 91/ 157/ EEC
- EU Directive 93/ 86/ EEC
- EU Directive 98/ 101/ EEC

Batteries used in the product do not contain:

- Mercury greater the 5ppm by weight
- Cadmium greater than 10ppm by weight
- Lead greater than 4000ppm by weight.

Battery size: CR2032 (coin cell)

Battery type: Lithium

Recycled material	<b>Product</b>	<ul style="list-style-type: none"><li>● This product contains 0% recycled materials (by weight).</li><li>● This product is 98.1% (by weight) recyclable when disposed of properly at end of life.</li></ul>
	<b>Packaging</b>	<ul style="list-style-type: none"><li>● The EPE foam packaging material contains at least 5% (by weight) post-consumer recycled content.</li><li>● The corrugated paper packaging materials contains at least 80% (by weight) post-consumer recycled content.</li><li>● The packaging for this product is 94% (by weight) recyclable when disposed of properly.</li></ul>

## Technical Specifications – Environmental Data

### RoHS Compliance

Hewlett-Packard is committed to compliance with all applicable environmental laws and regulations, including the European Union Restriction of Hazardous Substances (RoHS) Directive. HP's goal is to exceed compliance obligations by meeting the requirements of the RoHS Directive on a worldwide basis. From July 1, 2006, RoHS substances will be virtually eliminated (virtually = to levels below legal limits) for all HP electronic products subject to the RoHS Directive, except where it is widely recognized that there is no technically feasible alternative (as indicated by an exemption under the EU RoHS Directive).

### Material Usage

This product does not contain any of the following substances in excess of regulatory limits (refer to the HP General Specification for the Environment at:

[www.hp.com/hpinfo/globalcitizenship/environment/supplychain/gen\\_specifications.html](http://www.hp.com/hpinfo/globalcitizenship/environment/supplychain/gen_specifications.html)):

- Asbestos
- Certain Azo Colorants
- Certain Brominated Flame Retardants – may not be used as flame retardants in plastics
- Cadmium
- Chlorinated Hydrocarbons
- Chlorinated Paraffins
- Formaldehyde
- Halogenated Diphenyl Methanes
- Lead carbonates and sulfates
- Lead and Lead compounds
- Mercuric Oxide Batteries
- Nickel - finishes must not be used on the external surface designed to be frequently handled or carried by the user.
- Ozone Depleting Substances
- Polybrominated Biphenyls (PBBs)
- Polybrominated Biphenyl Ethers (PBBEs)
- Polybrominated Biphenyl Oxides (PBBOs)
- Polychlorinated Biphenyl (PCB)
- Polychlorinated Terphenyls (PCT)
- Polyvinyl Chloride (PVC) – except for wires and cables, and certain retail packaging has been voluntarily removed from most applications.
- Radioactive Substances
- Tributyl Tin (TBT), Triphenyl Tin (TPT), Tributyl Tin Oxide (TBTO)

### Packaging

HP follows these guidelines to decrease the environmental impact of product packaging:

- Eliminate the use of heavy metals such as lead, chromium, mercury and cadmium in packaging materials.
- Eliminate the use of ozone-depleting substances (ODS) in packaging materials.
- Design packaging materials for ease of disassembly.
- Maximize the use of post-consumer recycled content materials in packaging materials.
- Use readily recyclable packaging materials such as paper and corrugated materials.
- Reduce size and weight of packages to improve transportation fuel efficiency.
- Plastic packaging materials are marked according to ISO 11469 and DIN 6120 standards.

### End-of-life Management and Recycling

Hewlett-Packard offers end-of-life HP product return and recycling programs in many geographic areas. To recycle your product, please go to: [www.hp.com/recycle](http://www.hp.com/recycle) or contact your nearest HP sales office. Products returned to HP will be recycled, recovered or disposed of in a responsible manner. The EU WEEE directive (2002/95/EC) requires manufacturers to provide treatment information for each product type for use by treatment facilities. This information (product disassembly instructions) is posted on the Hewlett Packard web site at: [www.hp.com/go/recyclers](http://www.hp.com/go/recyclers). These instructions may be used by recyclers and other WEEE treatment facilities as well as HP OEM customers who integrate and re-sell HP equipment.

## Technical Specifications – Environmental Data

Hewlett-Packard Corporate Environmental Information	For more information about HP's commitment to the environment: Global Citizenship Report <a href="http://www.hp.com/hpinfo/globalcitizenship/gcreport/index.html">www.hp.com/hpinfo/globalcitizenship/ gcreport/index.html</a> Eco-label certifications <a href="http://www.hp.com/hpinfo/globalcitizenship/environment/productdesign/ecolabels.html">www.hp.com/hpinfo/globalcitizenship/environment/ productdesign/ecolabels.html</a> ISO 14001 certificates: <a href="http://www.hp.com/hpinfo/globalcitizenship/environment/operations/envmanagement.html">www.hp.com/hpinfo/globalcitizenship/environment/operations/envmanagement.html</a>
---	--

---

© Copyright 2009 Hewlett-Packard Development Company, L.P. The information contained herein is subject to change without notice. The only warranties for HP products and services are set forth in the express warranty statements accompanying such products and services. Nothing herein should be construed as constituting an additional warranty. HP shall not be liable for technical or editorial errors or omissions contained herein. Microsoft and Windows are trademarks of the Microsoft group of companies. ENERGY STAR is a U.S. registered mark of the United States Environmental Protection Agency.